

G25JDR29XX Series Contractor

ADA L-shape folding HPL seat, right orientation.
 Antimicrobial vinyl coated frame with zinc-plated steel core.
 10mm thick HPL seat top.

Mounting hardware supplied for wood stud installation.

Product Data

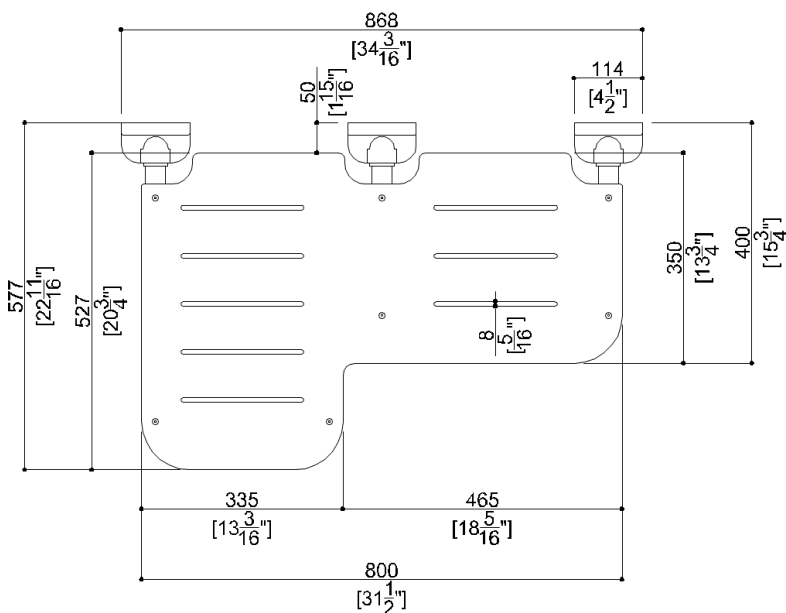
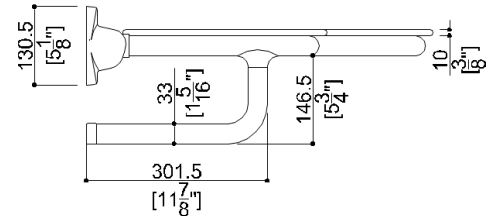
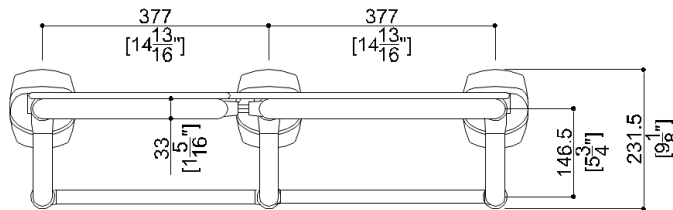
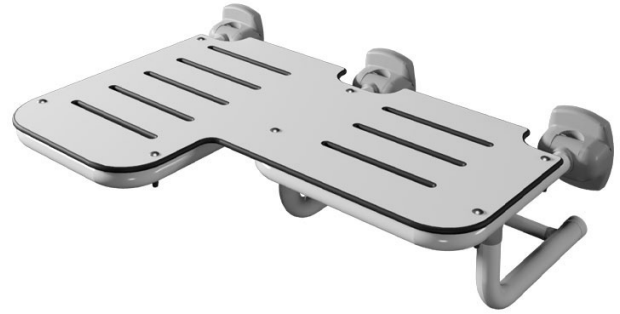
Overall Dimensions (Inch.)	34-3/16 x 22-3/4 x 9-1/8
Net Weight (lbs.)	14.99

Installation Hardware Details

Stainless steel screw	TE inox A2 8x70
-----------------------	-----------------

Packaging Details

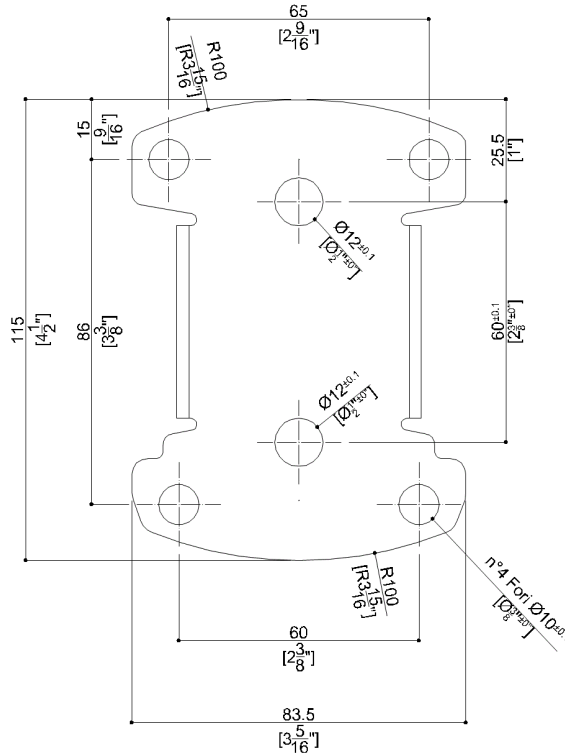
Package	LDPE bag in cardboard box
Package dimensions (Inch.)	34-3/8 x 9-5/16 x 23
Weight with Packaging (lbs.)	17.2



G25JDR29XX Series Contractor

Y88JKS27

Stainless steel AISI304 fixing plate



Available Finishes (xx)

Seat

W8
 Cold White

Structure

D1  Black	D2  Greystone	I1  Ivory
I2  Biscuit	W1  White	

Materials and finishes

Stainless Steel	Rough
Polyamide	Polished
Vinyl	Polished

Load Capacity

Vertical 450 lbs.

Warning

Before installation and use, read the installation and use instructions in their entirety. If questions arise please contact Ponte Giulio company.

Cleaning

Product can be cleaned with a cloth and warm soapy water. Non abrasive, solvent free cleaners can also be used.

Warranty

Please visit www.pontegiulio.com for complete warranty details.