

# G02JDR31XX Series Bariatric

Bariatric folding shower seat with legs

Mounting hardware supplied for wood stud installation.

**Product Data**

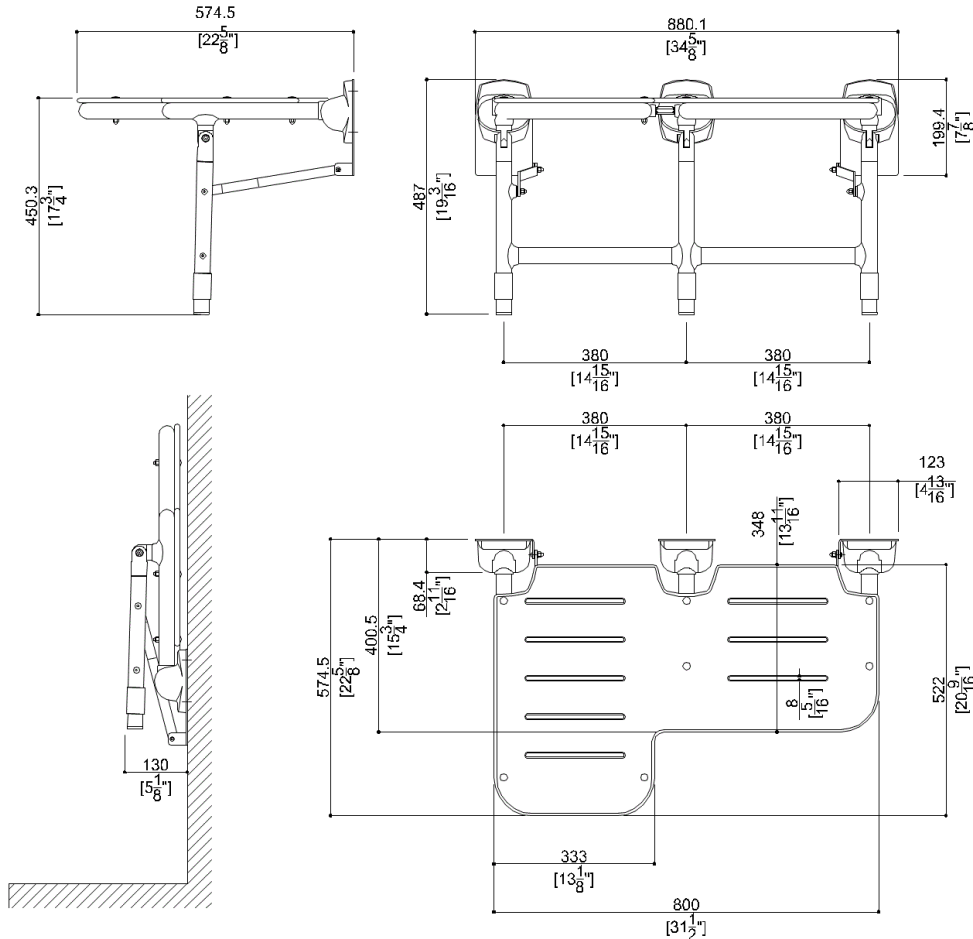
Overall Dimensions (Inch.)	34-5/8 x 22-5/8 x 19-3/16
Net Weight (lbs.)	35.49

**Installation Hardware Details**

Stainless steel screw	TE inox A2 8x70
-----------------------	-----------------

**Packaging Details**

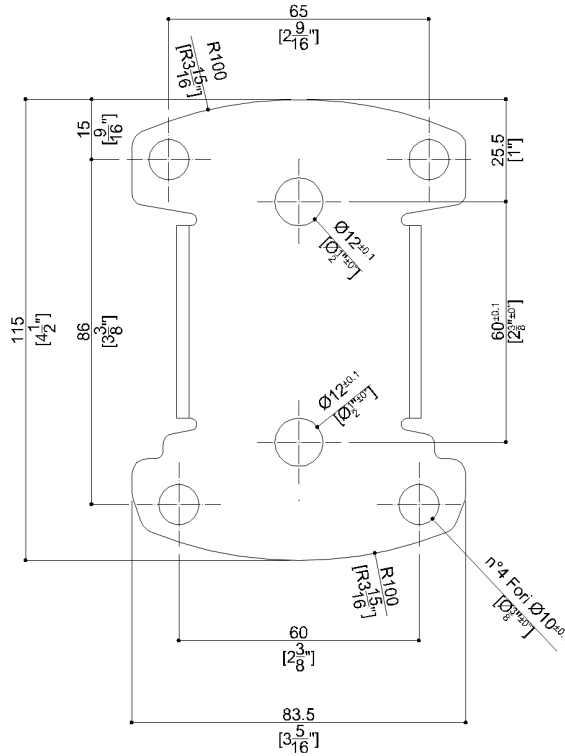
Package	Cardboard package
Package dimensions (Inch.)	35 x 5-11/16 x 29-5/16
Weight with Packaging (lbs.)	38.8



**G02JDR31XX** Series Bariatric

Y88JKS27

Stainless steel AISI304 fixing plate



**Available Finishes (xx)**

**Seat**

- W8 Cold White

**Structure**

- W1 White

**Materials and finishes**

Polyamide	Polished
HPL	Polished
Stainless Steel	Rough
Vinyl	Polished

**Load Capacity**

Vertical 1000 lbs.

**Warning**

Before installation and use, read the installation and use instructions in their entirety. If questions arise please contact Ponte Giulio company.

**Cleaning**

Product can be cleaned with a cloth and warm soapy water. Non abrasive, solvent free cleaners can also be used.

**Warranty**

Please visit [www.pontegiulio.com](http://www.pontegiulio.com) for complete warranty details.