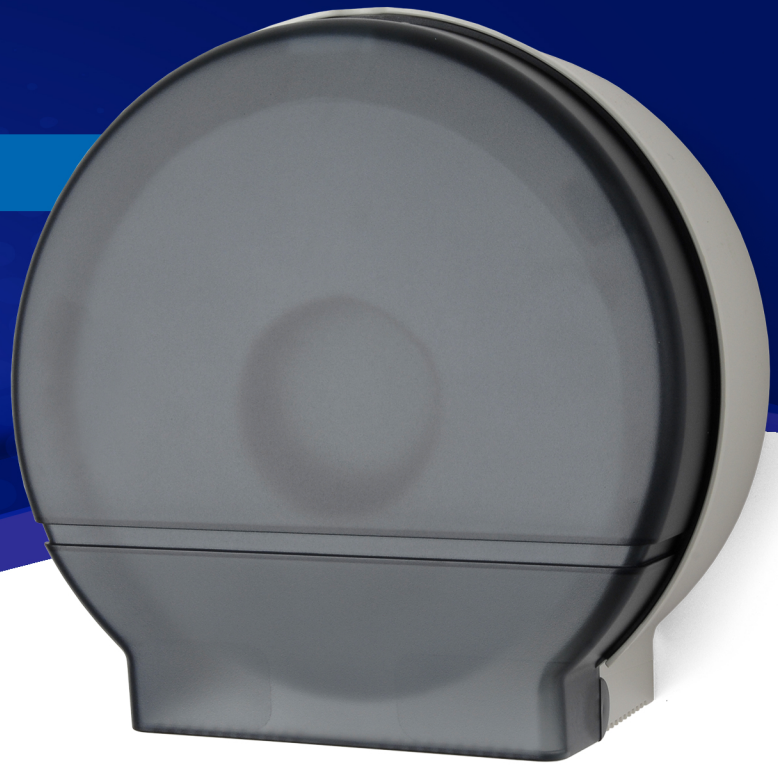


RD0026

Single 9" Jumbo Tissue Dispenser



FEATURES



- Universal for all brands of 9" diameter Jumbo Bath Tissue with minimum 3" core
- Holds all popular Jumbo Roll Tissue widths
- Dispenses perforated or non-perforated tissue, 1 or 2 ply
- Easy loading saves costly maintenance
- All plastic construction improves styling, provides easy to clean surface
- Permanent key knob available

AVAILABLE COLORS

Dark Translucent Cover with a Beige Back



Dark Translucent Cover with a Black Back

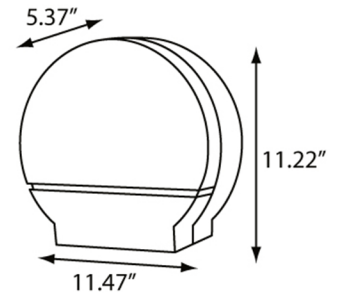


White Translucent Cover with a Beige Back



SPECIFICATIONS

Model #	RD0026-01 (Dark Translucent) RD0026-02 (Black Translucent) RD0026-03 (White Translucent) RD0026-01F (Dark Translucent) RD0026-02F (Black Translucent) RD0026-03F (White Translucent)		
Dimensions	11.47" W x 11.22" H x 5.37" D		
Weight	1.65 lbs	Case Pack	6 per case - 3.09' ³
Capacity	9" Roll (3 ³ / ₈ " Core) or 9" Roll (2 ¹ / ₄ "-3 ³ / ₈ " Core)	Key Type	1



V10.2019

Ph: 800.558.8678
Ph: 920.884.8698
Fax: 920.884.8699
info@palmerfixture.com



Palmer Fixture
P.O. Box 10887
Green Bay, WI 54307
www.palmerfixture.com