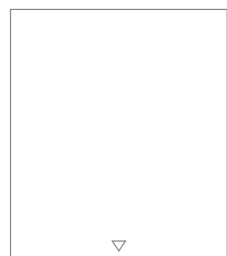


**bobrick** *fino* **collection** washroom accessories



**BUILDING VALUE SINCE 1906**

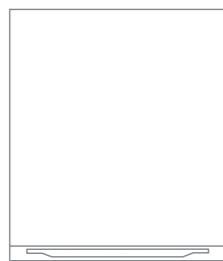
Bobrick, the global washroom accessory brand and Thrislington Cubicles, winners of multiple European design awards, have created the Fino Collection, an elevated design line of accessories. Crafted with high-quality satin finish stainless steel material, seamless construction, well-defined edges and concealed hardware. Fino offers the perfect balance of function and design sensibility.



**hand dryer**  
page 5

High-speed hand dryer.  
Width: 11 11/16" (297mm)  
Height: 13 7/16" (342mm)  
Depth: 3 15/16" (100mm)  
ADA compliant.  
Power consumption of 200 watts.  
10-12 second dry time.  
Type 304, 18 gauge (1.2mm), stainless steel.  
Satin finish as standard.

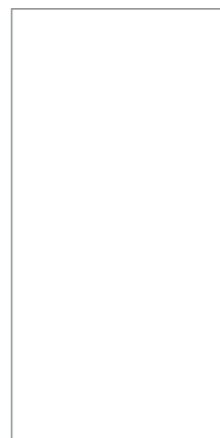
Models available:  
● B-7179



**towel dispenser**  
page 5

400 C-fold, 525 multifold.  
Built in TowelMate®  
Width: 11 11/16" (297mm)  
Height: 13 7/16" (341mm)  
Depth: 3 15/16" (100mm)  
ADA compliant.  
Type 304, 18 gauge (1.2mm), stainless steel.  
Satin finish as standard.  
Made in UK.

Models available:  
● B-9262



**waste receptacle**  
page 5

Width: 11 11/16" (297mm)  
Height: 23 7/8" (607mm)  
Depth: 6 1/8" (156mm)  
Type 304, 18 gauge (1.2mm), stainless steel.  
Satin finish as standard.  
Made in UK.

Models available:  
● B-9279



**coat hook**  
page 9

Width: 1 11/32" (34mm)  
Height: 1 1/2" (37.5mm)  
Depth: 2 1/2" (63.5mm)  
Type 303 stainless steel.  
Satin finish as standard.  
Made in UK.

Models available:  
● B-9542



**single roll holder**  
page 9

Width: 5 5/8" (142.5mm)  
Height: 1 11/32" (34mm)  
Depth: 2 15/16" (75mm)  
Type 303 stainless steel.  
Satin finish as standard.  
Made in UK.

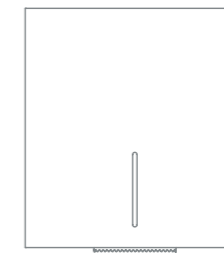
Models available:  
● B-9543



**double roll holder**  
page 9

Width: 10 1/2" (266mm)  
Height: 1 11/32" (34mm)  
Depth: 2 15/16" (75mm)  
Type 303 stainless steel.  
Satin finish as standard.  
Made in UK.

Models available:  
● B-9547



**jumbo roll holder**  
page 9

Width: 11 11/16" (297mm)  
Height: 12 3/4" (324mm)  
Depth: 5" (128mm)  
Type 304, 18 gauge (1.2mm), stainless steel.  
Satin finish as standard.  
Made in UK.

Models available:  
● B-9890



**grab bar**  
page 13

ADA/DDA compliant grab bars available in widths of 18", 24", 30", 36" and 42"  
Tube: Type 303, 14 gauge (2mm) stainless steel.  
Tube diameter: 1 1/2" (38.1mm)  
Satin finish as standard.  
Made in UK.

Models available:  
● B-9806 / B-9807

# washroom accessories

The Fino Collection Hand Dryer, Paper Towel Dispenser and Waste Receptacle all share the same width for a coordinated design. Its cubist simplicity adds a new level of sophistication to any restroom.



Year Guarantee



Made in UK

## Hand Dryer B-7179

**Specification:** Stainless steel high-speed hand dryer with power consumption of 200 watts. GreenSpec certified and ADA compliant with less than 4" protrusion from the wall. CULus-listed and CE-marked.

**Width:** 11 11/16" (297mm)  
**Height:** 13 7/16" (342mm)  
**Depth:** 3 15/16" (100mm), ADA compliant.  
**Power:** 110 – 240 volts 50/60 Hz  
**Current Consumption:** 2.0 Amps @ 115 volts / 1.0 Amps @ 230 volts  
**Nominal Output:** 0.2 kW  
**Drying Speed:** 10-12 Seconds.  
**Control System:** Automatic, infrared, no-touch.  
**Air:** 34 m<sup>3</sup>/h, 50 m/s @ 100mm, 23°C @ 20°C ambient  
**Material:** Type 304, 18 gauge (1.2mm), stainless steel.  
**Finish:** Satin finish as standard.



## Towel Dispenser B-9262

**Specification:** Stainless steel hand towel dispenser with flush lock. Proprietary design of built in TowelMate® ensures dispensing one towel at a time, reducing waste and towel usage by 20%.

**Capacity:** 400 C-fold or 525 multifold paper towels.  
**Towels:** C-Fold or multifold paper towels.  
**Width:** 11 11/16" (297mm)  
**Height:** 13 7/16" (341mm)  
**Depth:** 3 15/16" (100mm), ADA compliant.  
**Material:** Type 304, 18 gauge (1.2mm), stainless steel.  
**Finish:** Satin finish as standard.  
**Made in:** UK.



## Waste Receptacle B-9279

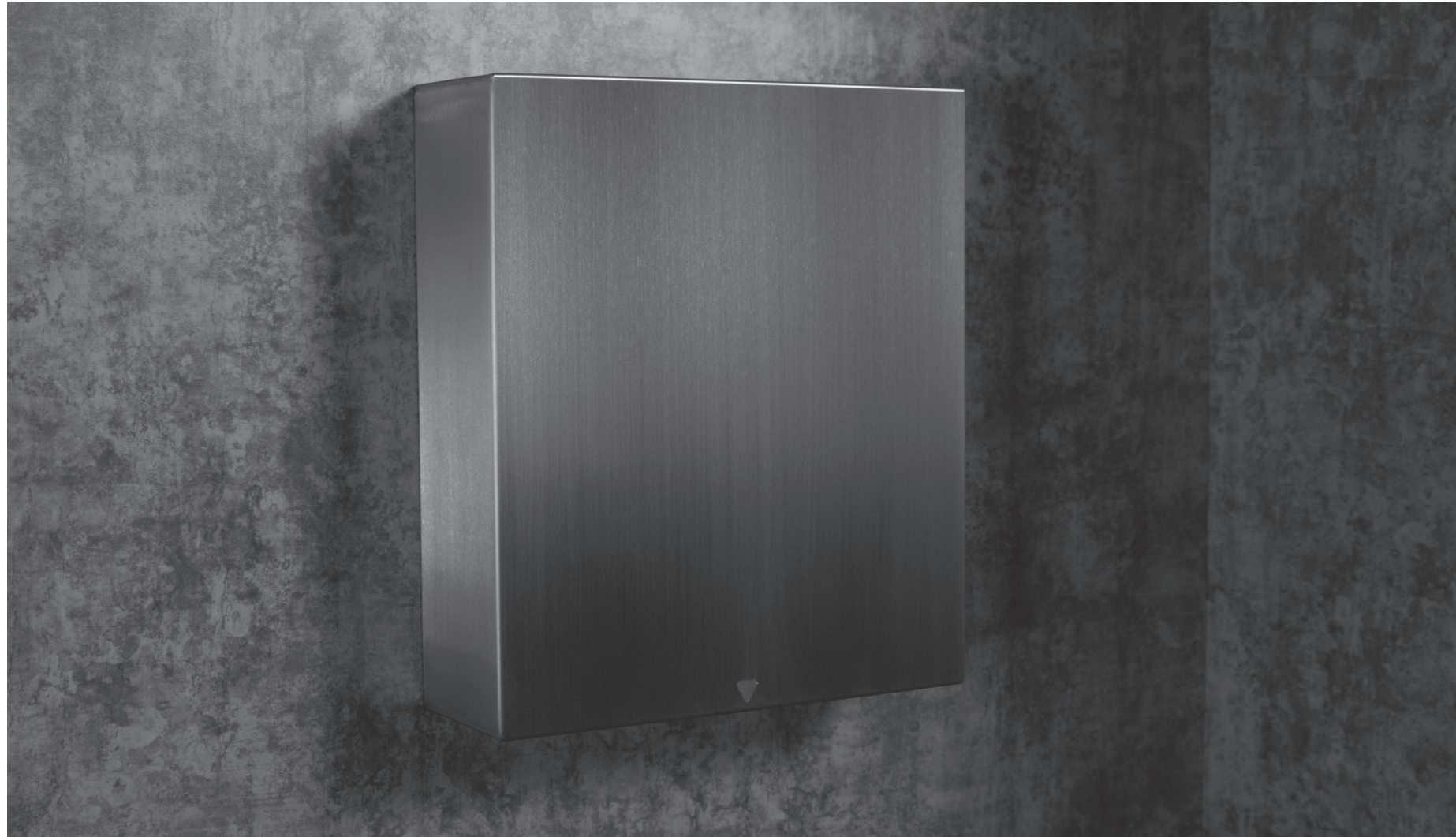
**Specification:** Stainless steel waste receptacle.

**Capacity:** 6 Gal (23-L)  
**Waste Container:** Removable, leakproof, rigid moulded plastic.  
**Width:** 11 11/16" (297mm)  
**Height:** 23 7/8" (607mm)  
**Depth:** 6 1/8" (156mm), ADA compliant.  
**Material:** Type 304, 18 gauge (1.2mm), stainless steel.  
**Finish:** Satin finish as standard.  
**Made in:** UK.





washroom accessories



Hand Dryer B-7179



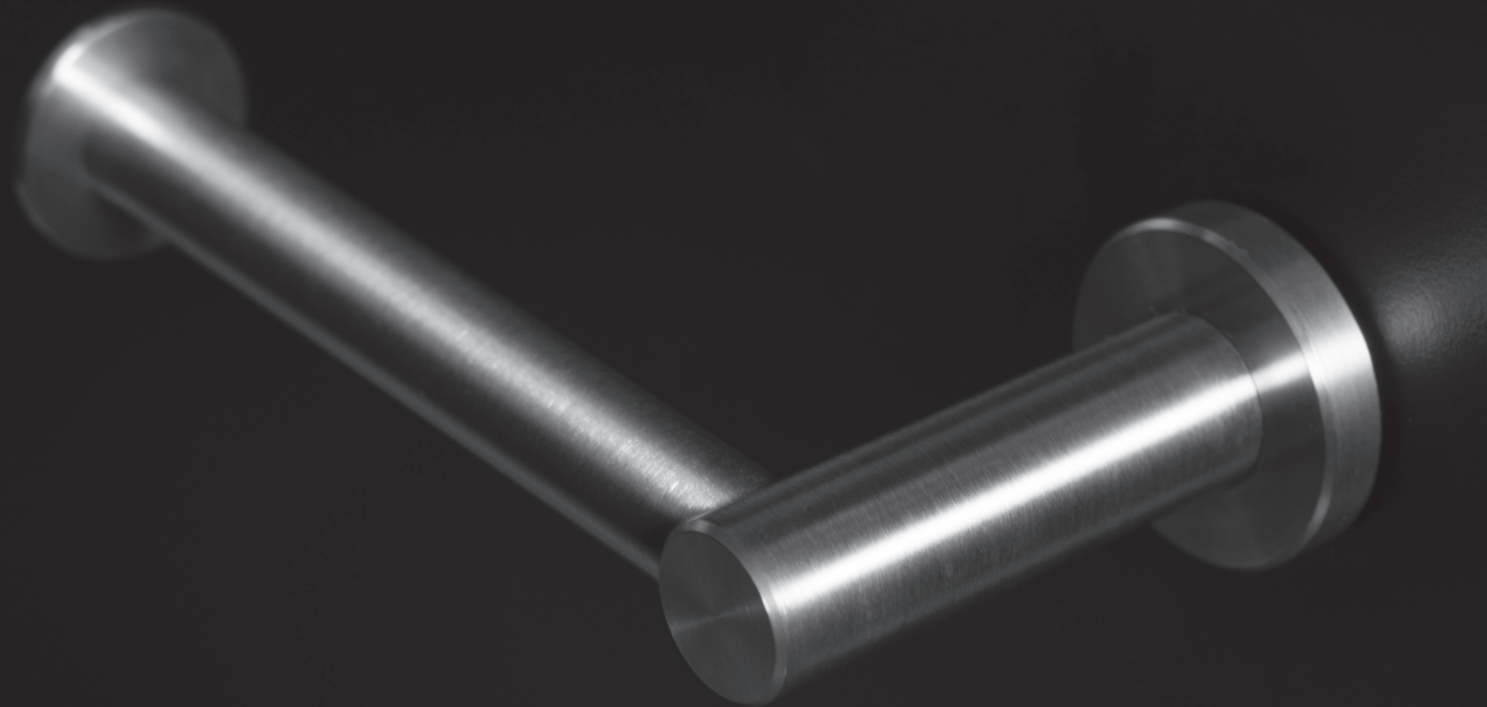
Towel Dispenser B-9262



Waste Bin B-9279



# cubicle accessories



The Toilet Roll Holders and the matching Hook offer a subtle and residentially inspired design for inside the cubicle. Their cylindrical aesthetics are the perfect complement to the rest of the Fino Collection accessories.



Year Guarantee



Made in UK

## Coat Hook B-9542

**Specification:** Machined stainless steel coat hook.  
**Height:** 1 1/2" (37.5mm)  
**Depth:** 2 1/2" (63.5mm)  
**Width:** 1 11/32" (34mm)  
**Material:** Type 303 stainless steel.  
**Finish:** Satin finish as standard.  
**Made in:** UK.



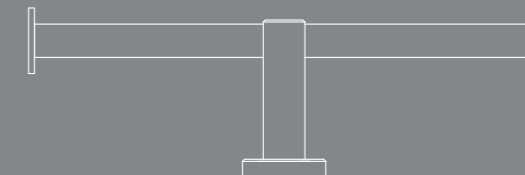
## Single Roll B-9543

**Specification:** Machined stainless steel fixed single toilet roll holder.  
**Height:** 1 11/32" (34mm)  
**Depth:** 2 15/16" (75mm)  
**Width:** 5 5/8" (142.5mm)  
**Material:** Type 303 stainless steel.  
**Finish:** Satin finish as standard.  
**Made in:** UK.



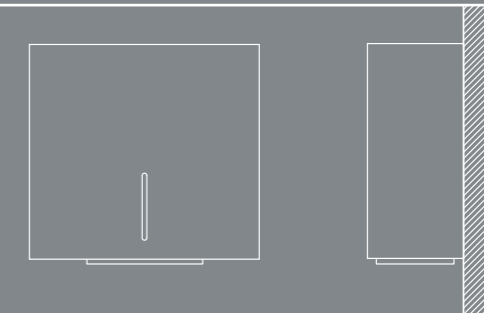
## Double Roll B-9547

**Specification:** Machined stainless steel fixed double toilet roll holder.  
**Height:** 1 11/32" (34mm)  
**Depth:** 2 15/16" (75mm)  
**Width:** 10 1/2" (266mm)  
**Material:** Type 303 stainless steel.  
**Finish:** Satin finish as standard.  
**Made in:** UK.

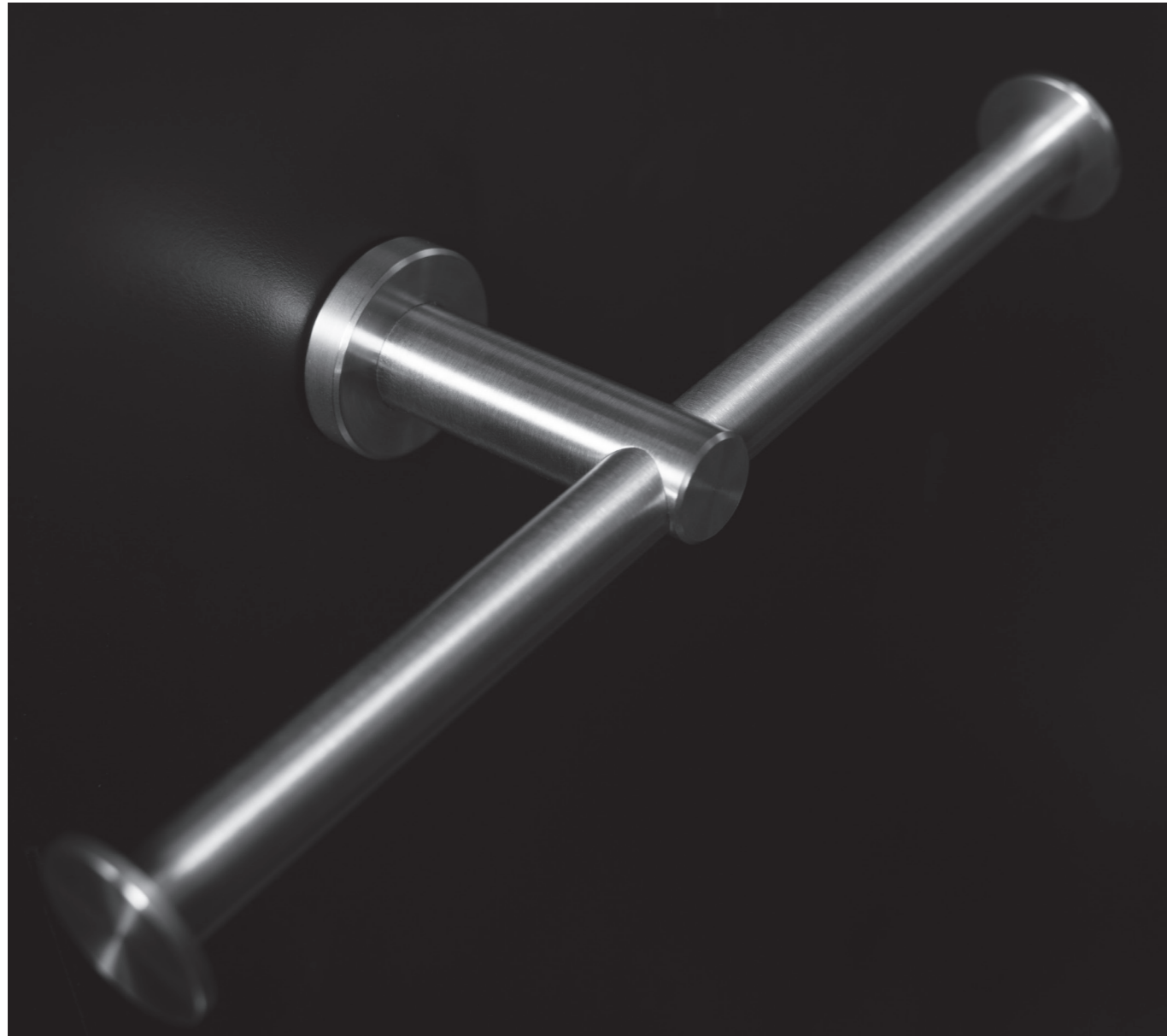


## Jumbo Roll B-9890

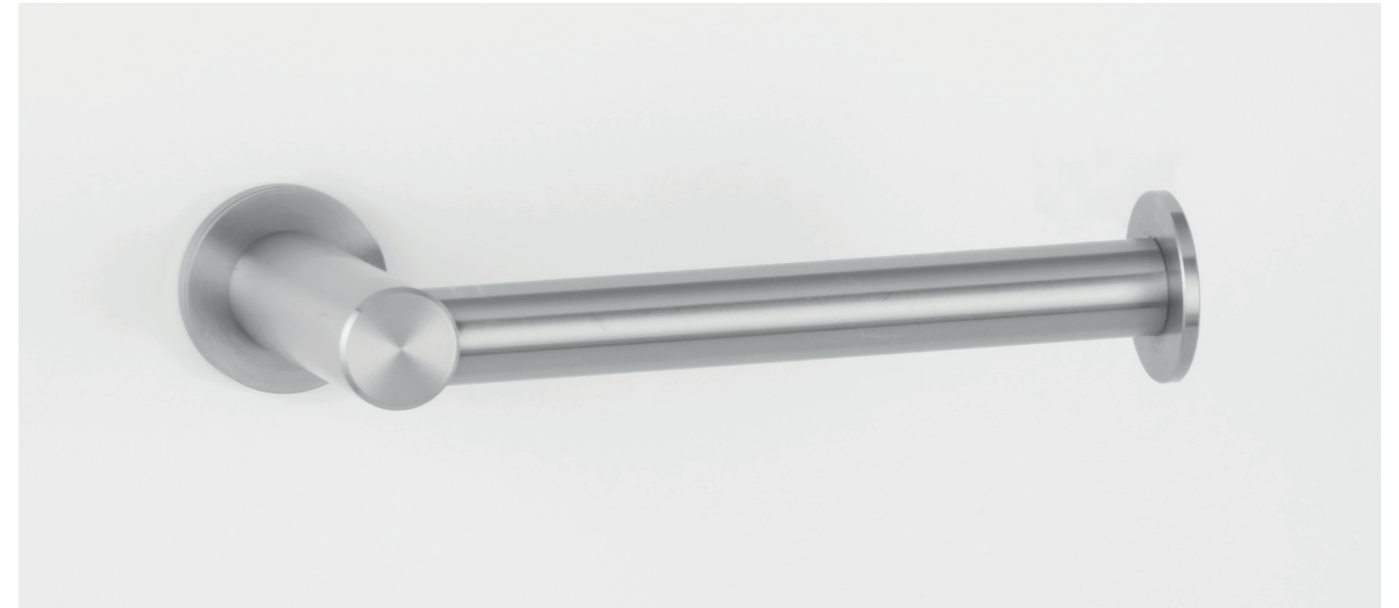
**Specification:** Stainless steel jumbo toilet roll holder with a flush lock.  
**Toilet Roll Size:** Spindle holds up to 10" (255mm) diameter roll.  
**Width:** 11 11/16" (297mm)  
**Height:** 12 3/4" (324mm)  
**Depth:** 5" (128mm)  
**Material:** Type 304, 18 gauge (1.2mm), stainless steel.  
**Finish:** Satin finish as standard.  
**Made in:** UK.



**cubicle accessories**



**Double Roll B-9547**



**Single Roll B-9543**



**Jumbo Roll B-9890**



**Coat Hook B-9542**



# grab bars



Our ADA/DDA compliant grab bars manufactured with 14 gauge (2mm) high quality stainless steel, machined flanges and hidden fixings, offer safety, beauty and a timeless design statement.



Year Guarantee



Made in UK

## Grab Bar B-9806 (USA & Canada) B-9807 (International)

**USA**  
**Length options:** 18", 24", 30", 36" or 42"  
**Depth:** 1 1/2"

**International**  
**Length options:** 457mm, 610mm, 914mm or 1066mm  
**Depth:** 57mm

**Custom lengths available upon request.**

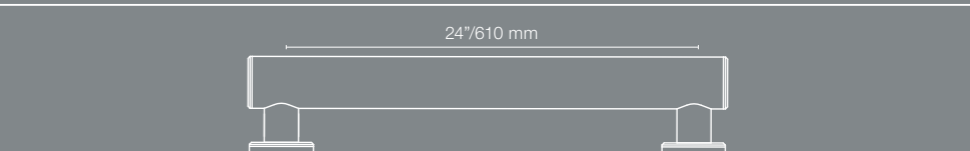
**Specification:** ADA/DDA compliant grab bars available in a range of lengths.

**Tube Diameter:** 1 1/2" (38.1mm)

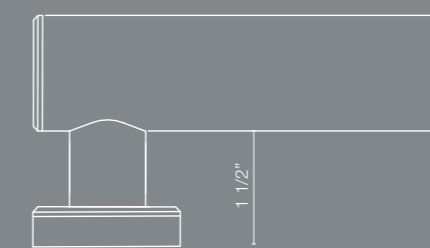
**Gauge:** 14 (2mm)

**Body Material:** Type 303 stainless steel.

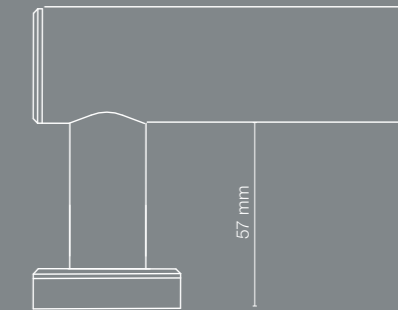
**Finish:** Satin finish and matte black as standard.



**USA & Canada: B-9806**



**International: B-9807**



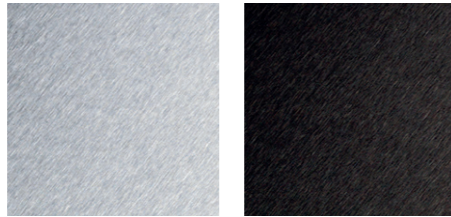


# finishes

All Fino accessories come in stainless steel with satin finish as standard. We also offer 4 PVD finishes and a variety of powder coated options to choose from.

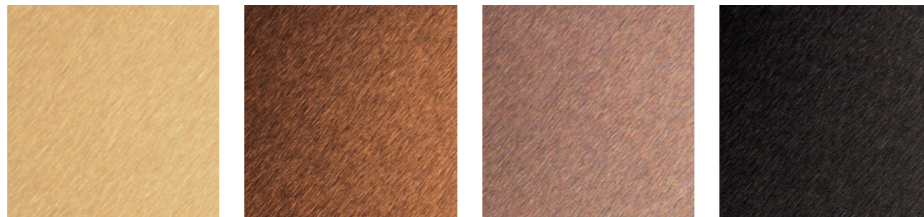
## standard

All our products come in stainless steel with satin finish and matte black as standard.



## pvd

Available in brass, copper, bronze and black. Physical Vapor Deposition is a coating technique produced in a vacuum that vaporises the coating material into a thin film of atoms onto our stainless steel. PVD coating is both incredibly durable and easy to clean, but also very environmentally friendly, much more so than traditional coating techniques.



## powder coated

As a special order all of our range can be powder coated to any specified Pantone or RAL colour.





Bobrick.com

U.S. Corporate Office	818.982.9600	customerservice@bobrick.com
Canadian Offices	877.423.6555 Eastern Canada	customerservice@bobrick.com
	877.423.6444 Western Canada	
International Customer Service	+1.818.764.1000	international@bobrick.com
UK & Europe	+44 0208 366 1771	uksales@bobrick.com euoffice@bobrick.com
Thrislington Cubicles A Division of Bobrick	+44 1244 520 677	sales@thrislington-us.com

Illustrations and descriptions herein are applicable to production as of the date of this catalog. The manufacturer reserves the right to, and does from time to time, make changes and improvements in designs and dimensions.

For product warranty information, including warranty conditions and limitations for Bobrick Washroom Accessories, Koala Kare Products Baby Changing Stations and other products, please visit [bobrick.com](http://bobrick.com).

Bobrick, Koala Kare and MICROBAN and other brand names are registered with the United States Patent and Trademark Offices and as trademarks in several countries throughout the world. For patent information, please visit [bobrick.com/patents](http://bobrick.com/patents).