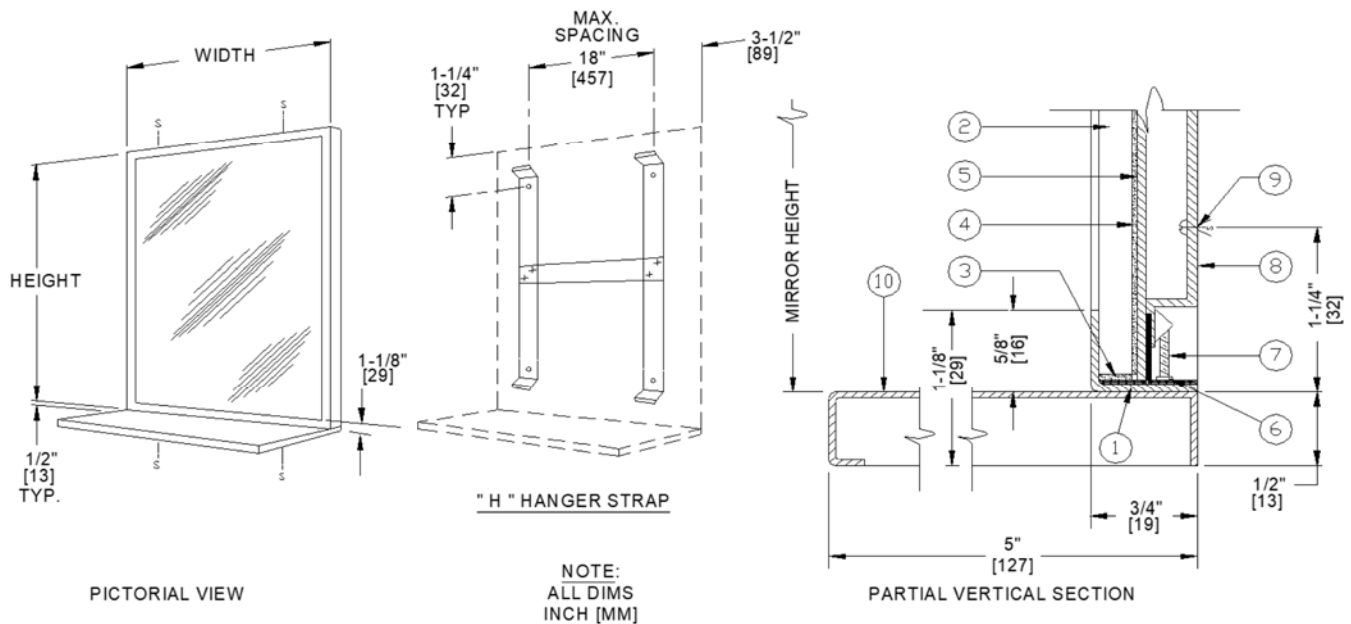




**AMERICAN SPECIALTIES, INC.**  
 441 Saw Mill River Road, Yonkers, NY 10701  
 (914) 476.9000 • (914) 476.0688  
 www.americanspecialties.com

<b>MODEL №:</b>	<b>0605</b>
<b>ISSUED:</b>	<b>01/87</b>
<b>REVISED:</b>	<b>19 FEB 2018</b>

## INTER-LOK STAINLESS STEEL MIRROR WITH SHELF



**DESCRIPTION**

- |   |   |
|---|---|
| <ol style="list-style-type: none"> <li>1. 18 GAUGE STAINLESS STEEL FRAME</li> <li>2. 1/4" [6] PLATE GLASS MIRROR</li> <li>3. SHOCK-ABSORBING EDGE CUSHION</li> <li>4. NON-ABSORBENT FILLER</li> <li>5. 20 GAUGE CORROSION PROTECTED STEEL BACK</li> </ol> | <ol style="list-style-type: none"> <li>6. MOUNTING NUT</li> <li>7. TAMPER-PROOF MOUNTING &amp; LOCKING SCREW 10-32 x 1-1/4" [32]</li> <li>8. HANGER BRACKET - 18 GAUGE</li> <li>9. INSTALLATION SCREW - FURNISHED BY INSTALLER</li> <li>10. STAINLESS STEEL SHELF 18 GAUGE</li> </ol> |
|---|---|

**SPECIFICATION**

Inter-Lok Stainless Steel Framed Mirror with Shelf shall be fabricated of alloy 18-8 stainless steel, type 304, 18 gauge with mitered corners welded and polished. Structural reinforcement gussets shall be of welded construction. Mirror glazing shall be \_\_\_\_\_ (insert glazing option) and shall be warranted for 15 years against silver spoilage. All edges of mirror shall be protected with friction and chafe absorbing fillers. Back of mirror shall be protected by full size shock-absorbing water-resistant filler and full size one piece 20 gauge corrosion protected steel. An 18 gauge corrosion protected steel "H" bracket shall be supplied. Mirror shall be secured to vertical brackets with corrosion protected headless hex socket locking screws furnished. All exposed surfaces shall be satin finish.

**Inter-Lok Stainless Steel Framed Mirror with Shelf shall be Model № 0605-\_\_\_\_\_ (insert glazing option) \_\_\_\_\_ (note size W x H) as manufactured by American Specialties, Inc., 441 Saw Mill River Road, Yonkers, New York 10701-4913.**

**MATERIALS**

- Frame:** 18-8, type 304, 18 gauge (.048" [1.2] thick) stainless steel. Unitized all welded construction. Corners mitered, welded and polished. Exposed surfaces have satin finish. Edges and corners are burr free.
- Shelf:** 18-8, type 304, 18 gauge (.048" [1.2] thick) stainless steel. Unitized all welded construction. Exposed surfaces have satin finish. Edges and corners are burr free.
- Glass:** Standard glazing is №1 quality, 1/4" [6.4] thick plate/float, silver coated and hermetically sealed with a uniform coating of electrolytic copper plating, warranted against silver spoilage for 15 years. Mirrors meet Federal Spec. DD-M-411C, ASTM C-1503, and ASTM C-1036-91.
- Filler:** Expanded polyethylene microcell foam sheet material, abrasion resistant and shock absorbing, water resistant, 1/8" [3.2] total layer thickness.

**INSTALLATION**

Install brackets level and plumb per diagram location using №10 self-tapping screws (by others). Hang mirror on brackets and tighten locking screws provided at top & bottom. For compliance with 2010 ADA Accessibility Standards, bottom edge of reflecting surface should be no higher than 40" [1016] above finished floor.

**GLAZING OPTIONS**

Units are supplied with 1/4" [6.4] thick plate glass. Other glazing options are available. For a complete description of any other available glazing, see the **MIRROR GLAZING OPTIONS** chart.



**AMERICAN SPECIALTIES, INC.**  
 441 Saw Mill River Road, Yonkers, NY 10701  
 (914) 476.9000 • (914) 476.0688  
 www.americanspecialties.com

**MODEL №: GLAZINGS**

**ISSUED: 1-87**

**REVISED: 22 MAY 2014**

**MIRROR GLAZING OPTIONS**

GLAZING SUFFIX	DESCRIPTION
A	Plate Glass - 1/4" (6.4mm) thick № 1 quality polished, silver coated and hermetically sealed with a uniform coating of electrolytic copper plating. Mirrors meet Federal Spec. № DD-M-411C, ASTM C-1503 and ASTM-C-1036-91. Image quality: Excellent
B (1,2,3)	Tempered Glass - 1/4" (6.4mm) thick polished tempered glass with two coats of silver applied. Electroplating with a heavy uniform coating of copper hermetically seals the silver. Back of mirror is finished and protected with a thick coat of heavy waterproof paint. Glazing meets Federal Specification № DD-G1403B, Amendment 1, ASTM C-1503 and ASTM-C-1048-92. Image quality: Good
C (1,2,3)	Metal Mirrors - Shall be Type 304 alloy 18-8 stainless steel, 20 gauge polished to a № 8 mirror finish. Image quality: Good
D (1)	Lexan Dura-Mirror - 1/4" (6.4mm) thick polycarbonate sheet, highly impact resistant. Mirror face is provided with a thick removable masking to prevent scratching during installation. Image quality: Very Good
E (1)	Plexiglas® - Shall be 1/4" (6.4mm) thick acrylic plastic, lightweight and highly shock resistant. Image quality: Very Good
L (1)	Mirror is fabricated with an interlayer of 1/32" (.8mm) thick vinyl bonded between two 1/8" (3mm) thick sheets of № 1 quality polished plate glass with back silver coated and hermetically sealed with a uniform coating of electrolytic copper plating. Back of mirror is finished and protected with a thick coat of heavy-duty waterproof paint. Laminated glass meets the performance criteria of Federal Spec. № DD-M-451 and ANSI Z87.1 specifications and complies with CPSC standards 16 CR 1201 (1) 11. Image quality: Excellent

**NOTES**

1. Glazing types indicated are particularly suited to applications where frequent breakage and/or security problems exist. These surfaces are best specified for use in prisons, schools, police stations, hospital wards, etc., where shards of broken glass might possibly be used as weapons.
2. The reflective quality of these mirror types is not as true as plate glass.
3. ASI will not accept returns of these mirror types based upon claims of distortion in reflective properties.