



AMERICAN SPECIALTIES, INC.

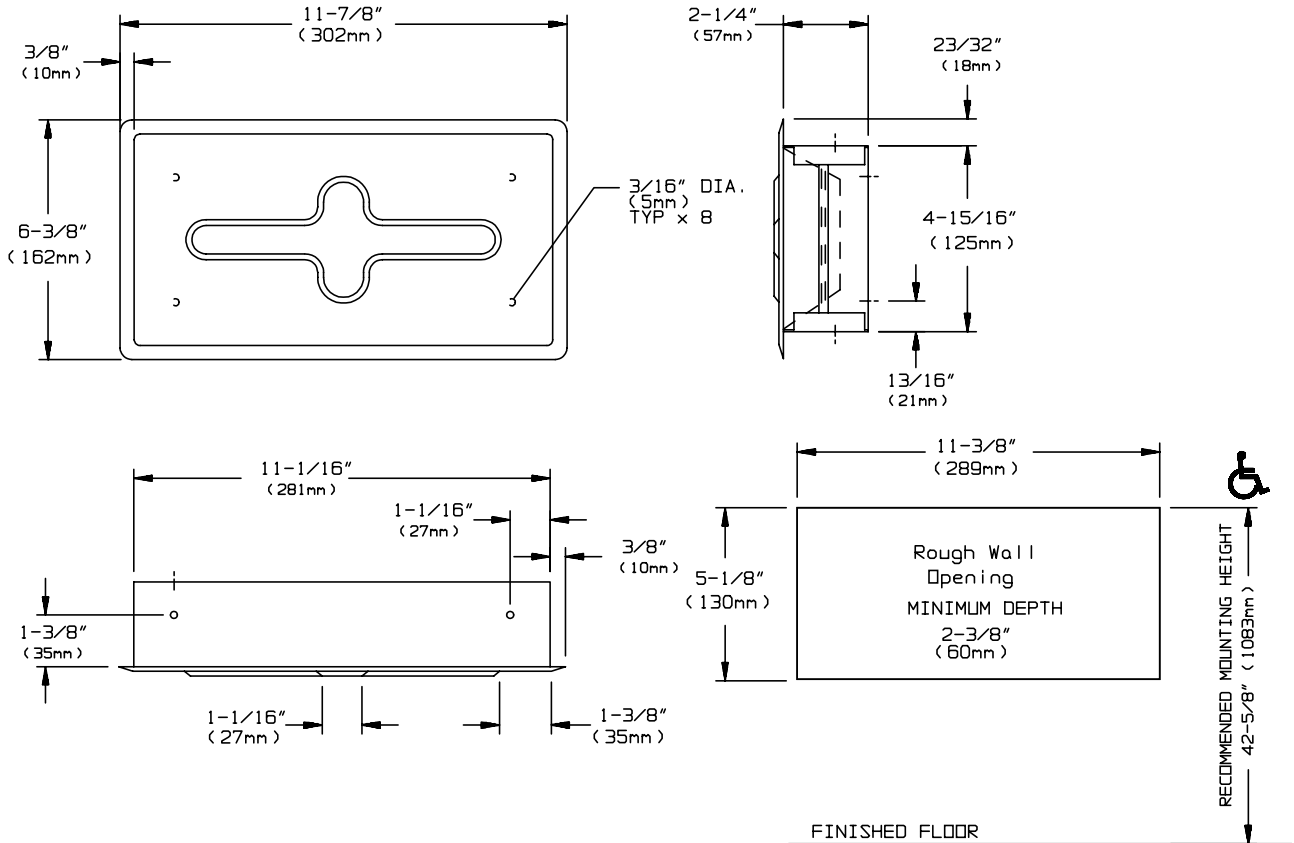
441 Saw Mill River Road, Yonkers, NY 10701 (914) 476-9000

MODEL No: 0259-SS

ISSUED: 1-87

REVISED: 8-04

RECESSED FACIAL TISSUE DISPENSER



SPECIFICATION

Recessed Facial Tissue Dispenser shall hold and dispense 150 two-ply sheets or 300 single sheets. Cover shall be fabricated of alloy 18-8 stainless steel, type 304, 22 gauge with N° 4 satin finish and be protected during shipment with a PVC film easily removable after installation. Cover shall be held closed by hooks located on each side and shall correspond to clips located on side walls of dispenser body. Cover shall be supplied with tissue dispensing slot and shall be smooth and rounded. Cabinet shall have mounting holes located all around.

Recessed Facial Tissue Dispenser shall be Model N° 0259-SS as manufactured by American Specialties, Inc. 441 Saw Mill River Road Yonkers, New York 10701-4913.

INSTALLATION

Secure dispenser with screws (by others) through mounting holes in rear of cabinet.

Rough Wall Opening (RWO) required is..... 11-3/8" W x 5-1/8" H x 2-3/8" D (289mm x 130mm x 60mm)

OPERATION

To refill the dispenser, remove the cover by pulling on face plate and disengaging the hooks from the side wall clips and reload with supply box. Fit the first sheet through the slot to start, then replace the cover.

OPTIONS

For optional bright polished finish, add suffix B to Model N° (e.g. 0259-SSB)

Accessory Specialties

AMERICAN DISPENSER

Desert Ray Products

WATROUS INC.

THIS MANUFACTURER RESERVES THE RIGHT TO MAKE CHANGES IN DESIGN OR DIMENSIONS WITHOUT FORMAL NOTICE