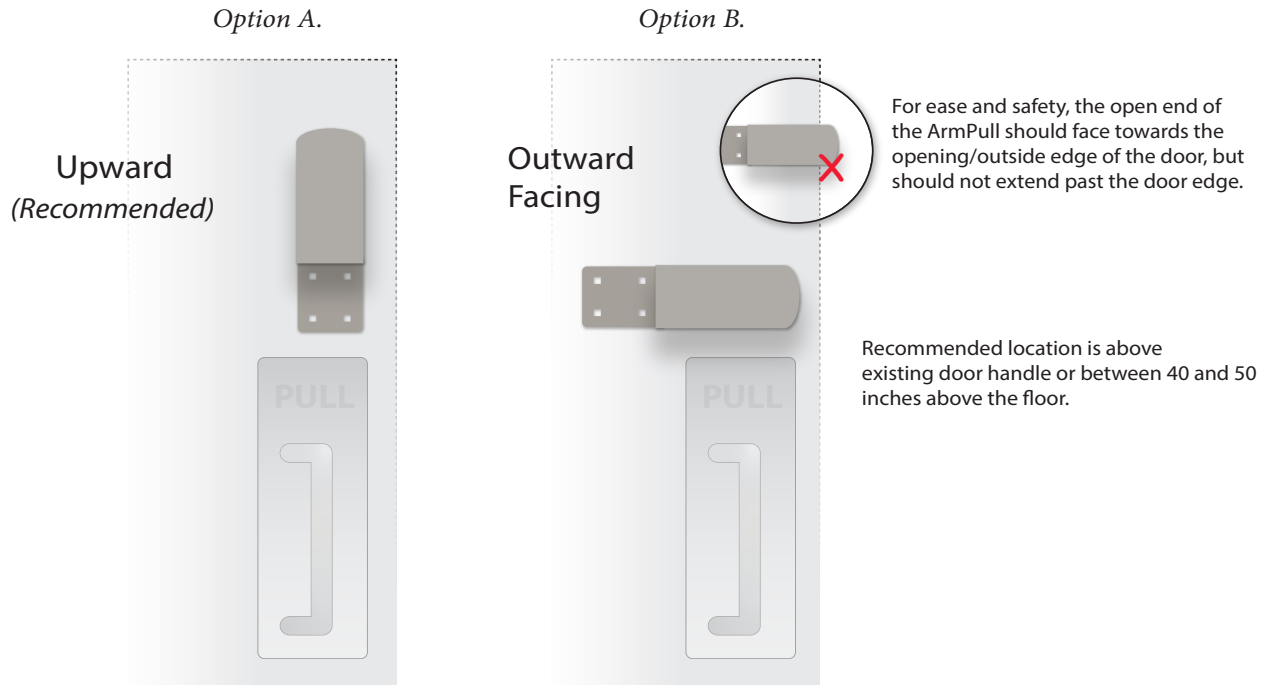




Installation Instructions

Tools required: #2 PHILLIPS HEAD SCREWDRIVER, C-CLAMP, PENCIL, DRILL & DRILL BITS

Step 1. Choose your orientation.



Place the ArmPull above the existing handle in desired orientation and location. Clamp or hold it to the door. If using option B., be sure that no part of the ArmPull is projecting past the edge of the door.

Step 2. Trace inside each of the mounting holes to provide a guide for drilling pilot holes.

For solid doors and doors that can support the weight of the ArmPull

Use a 3/16" drill bit and drill pilot holes approximately 1" in depth.

(PROCEED TO STEP 3a)

For hollow core doors

Many hollow core doors can support the ArmPull using the 4 screws provided. You may want to add anchors (not provided) for additional support. If your door is not strong enough to support the ArmPull, you may request an additional through-bolt kit from your ArmPull provider or purchase from a hardware store. The kit is intended for 1 3/4" thick doors and includes 4 sets of 1/4" x 2 1/4" stainless steel carriage bolts, 1/4-20 Nylock nuts, 1/4 x 5/8" flat washers.

Use a 5/16" drill bit and drill pilot holes all the way through the door.

(PROCEED TO STEP 3b)

Step 3a. (Solid Doors) Clamp or hold the ArmPull to the door. Using a #2 Phillips screwdriver or drill bit, insert and tighten the screws provided.

Step 3b. (Doors Needing Additional Support) Clamp or hold the ArmPull to the door. Insert the bolts through the ArmPull and door. Place a washer and then a Nylock nut on the ends of each bolt, and tighten down.

IMPORTANT NOTES:

1. **Install a doorstep** (not included) to prevent the ArmPull from hitting the wall, which may damage both the wall and the ArmPull. If using a wall mounted doorstep, be sure it is long enough (5") to make contact with the door.
2. If desired, follow the door closer manufacturer's instructions to change the spring tension to enable smooth and safe use of the ArmPull.

Care & Cleaning

Keep your ArmPull sanitary by regularly cleaning it. As with all stainless steel, avoid bleach, chlorine, or bromine based solutions.

Periodically, use a stainless steel polish. This will help avoid discoloration, staining, and rust residue.

When installed outside, even high-quality stainless steel like the ArmPull can develop rust spots. Spots can be buffed out with a fine steel wool or Scotch-Brite pads. Always rub with the grain (in the same direction as the existing brush marks) on the ArmPull. Wipe and polish immediately afterwards.

Warning! Important disclaimer.

By installing the ArmPull, the user accepts all responsibility for its use and agrees to hold harmless ArmPull, its related parties, manufacturers and distributors from the effects of damage or injury.

Caution must be taken so that no person or object is in the way of a swinging door, which could cause serious injury. It is your responsibility to ensure that the ArmPull is installed in a way that it is safe from inadvertent contact with a person and that appropriate warning is given to those approaching the door. The ArmPull must not over-hang the outside edge of a door where it is more likely to come into contact with a person or object.

It is recommended that appropriately sized door-stops are installed to avoid contact with the wall behind the door.

LIMITED LIFETIME WARRANTY

Supplier represents and warrants that this item will be free from defects in material or workmanship and that no defect in material or workmanship will prevent the item from functioning and performing in accordance with the specifications. To submit a claim, the customer must first contact the supplier to authorize a return. It is the customer's responsibility to arrange and pay for shipping the faulty item back to supplier for evaluation before any claim can be processed. After inspection, if, in the supplier's sole judgment, the item is deemed to be faulty, supplier will deliver a new, similar or comparable item to the customer free of charge or, supplier will refund the original cost of the item, excluding any original shipping costs, at supplier's discretion. Supplier will arrange and pay for the cost of shipping the item back to the customer if within the 50 United States. It is the customer's responsibility to arrange and pay for shipping and other delivery fees outside of the 50 United States. Proof of purchase required for any claim.