



Halsey Taylor[®]
Satisfying Thirsts Since 1912

OVL-II™ Series Single Filtered Wall Mount Refrigerated Fountain Barrier-Free with HydroBoost®

MODEL: HTHBWF-OVLER-I

GENERAL

Complete water station including HydroBoost® bottle filling station and OVL-II™ style water fountain. One face-mounted fountain, one-piece, non-corrosive stainless steel number 300 series with brushed satin finish. Contour-formed basin with softly rounded corners and edges reduces splatter, insures proper drainage and prevents standing waste water. Designed to be easily accessible to both physically challenged and able-bodied individuals. Ideally suited for installation in public areas. Model meets state and federal requirements as defined by the Americans with Disabilities Act.

HYDROBOOST® BOTTLE FILLING STATION

Sensor-activated enhanced with user interface graphics. Quick fill rate is 1.1 gallons per minute. Laminar flow provides a clean fill with minimal splash and easy maintenance. Key plastic components are integrated with silver ion anti-microbial protection to inhibit growth of mold and mildew.

LEAD REDUCTION FILTER WITH FILTER LIFE INDICATOR

Equipped with the WaterSentry® Plus Filter. Quick-Disconnect, ¼ turn installation and automatic inlet shut-off valve that closes when filter is removed. High-grade filter is made with activated carbon and patented ATS lead-removal media. Certified to NSF/ANSI 42 for Chlorine-Class 1, Particulate-Class 1 and Taste and Odor and NSF/ANSI 53 for Lead Reduction. Green, yellow and red LEDs visually indicate when filter maintenance is required.

Replacement Filters: Available as Singles and Multi-Packs.

Order part numbers:

- 55898C - Single replacement filter
- 55898C - 3PK - Filter three pack
- 55898C - 12PK - Filter twelve pack
- 55898C - 24PK - Filter twenty-four pack
- 55898C - 48PK - Filter forty-eight pack

SILVER ION ANTI-MICROBIAL PROTECTION

Key plastic components are integrated with silver ion anti-microbial protection to inhibit growth of mold and mildew.

GREEN COUNTER™

Visually displays count of plastic bottles saved from waste. (Based on 20 oz. bottles.)

DOUBLE BUBBLER™

Features an exclusive one-piece, chrome plated two-stream mound-building bubbler with non-removable anti-squirt feature. The integral hood insures a satisfying drink of water.

PUSHBUTTON ACTUATION MECHANISM

Self-closing, vandal-resistant pushbutton does not require grasping or twisting.

PANEL

Constructed of stainless steel, No. 300 Series with satin finish.

MOUNTING FRAME

Mounting frame is manufactured of corrosion resistant, galvanized steel. Open construction designed for ease of installation. Mounting frame can be shipped in advance for rough-in installation.

AUTOMATIC STREAM HEIGHT REGULATOR

Self-closing assembly is located inside unit to prevent tampering. Unit resists corrosion and lining. A constant stream height is automatically maintained under line pressures that vary from 20 to 105 psi.

WATER INLET - 3/8" O.D. Tubing. **DRAIN OUTLET** - 1-1/4" tube outlet for 1-1/2" slip joint connection. (P-Trap not included.)

REFRIGERATION SYSTEM

Hermetically sealed, positive start compressor with lifetime lubrication and built-in overload protection, efficient capillary sizing, large capacity dryer-strainer, and self-lubricated fan cools copper/aluminum condenser. System uses R134A refrigerant. Protected by Halsey Taylor's Limited 5 Year Warranty.

CAPACITIES CHART

Model	Voltage / Hertz	Chilling Capacity	F.L. Amps	Rated Watts	Approx. Ship Wt.
HTHBWF-OVLER-I	115V / 60Hz	8 GPH	5.0	370	173 lbs.

Note: Continued product improvement makes specification subject to change without notice. See Halsey Taylor website for most current spec Sheet.

OVL Fountain With Bottle Filler

Rated for Indoor Use Only



SUGGESTED SPECIFICATIONS

Provides 8.0 gph of 50°F water at 90°F ambient and 80°F inlet water. Unit shall include single oval fountain with integral bottle filling station constructed of stainless steel and ABS plastic. Bottle filler shall include electronic sensor for no-touch activation with automatic 20-second shut-off timer. Shall provide 1.1 gpm flow rate with laminar flow to minimize splashing. Shall include anti-microbial protected plastic components to prevent mold and mildew. Fountain shall include front pushbutton activation. Shall have oval contoured fountain basin to minimize splashing and standing water and include rounded edges. Projector shall be two-stream, mound-building type with integral hood guard and anti-squirt feature. Shall include the WaterSentry® Plus filter, certified to NSF/ANSI 42 and 53 for lead reduction, with visual filter monitor to indicate when replacement is necessary. Shall comply with ICC A117.1 and ADA requirements. The manufacturer shall certify the unit to meet the requirements of NSF/ANSI 61 and 372, UL 399 and CAN/CSA 22.2 No. 120.

Optional Accessories (Extra Cost)

- Vandal-Resistant Kit
- Easy-Flex™ Bubbler

Each HTHBWF-OVLER-I consists of 3 cartons as follows:

- Fountain, Panel and Misc. Parts
- Mounting Frame
- Remote Chiller

Service stop not included.



halseytaylor.com

HALSEY TAYLOR, 2222 Camden Court, Oak Brook, IL 60523

SPEC00373 (05/2015)

Model HTHBWF-OVLER-I
OVL-II™ Series Single Filtered
Wall Mount Refrigerated Fountain
Barrier-Free with HydroBoost®
 (continued)



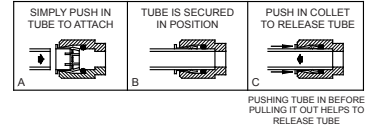
Halsey Taylor®
 Satisfying Thirsts Since 1912

MOUNTING INSTRUCTIONS:

Refer to diagrams for rough-in of plumbing. Install mounting frame into wall per the installation instructions. Hang fountain panel over the wall plate assembly. Attach fountain to wall plate assembly. Water service line and waste line are to be assembled as required. Final check for leaks and correct functions of fountain should be made. (For details see the installation instructions.)

- NOTE:** A service stop (not included) must be installed at the fountain inlet line.
NOTE: P-Trap (not supplied) to be installed per local building code.
NOTE: For wall support required locations see installation instructions provided with panel and fountains.

OPERATION OF QUICK CONNECT FITTINGS



CAUTION - Fountain must be securely bolted to wall.

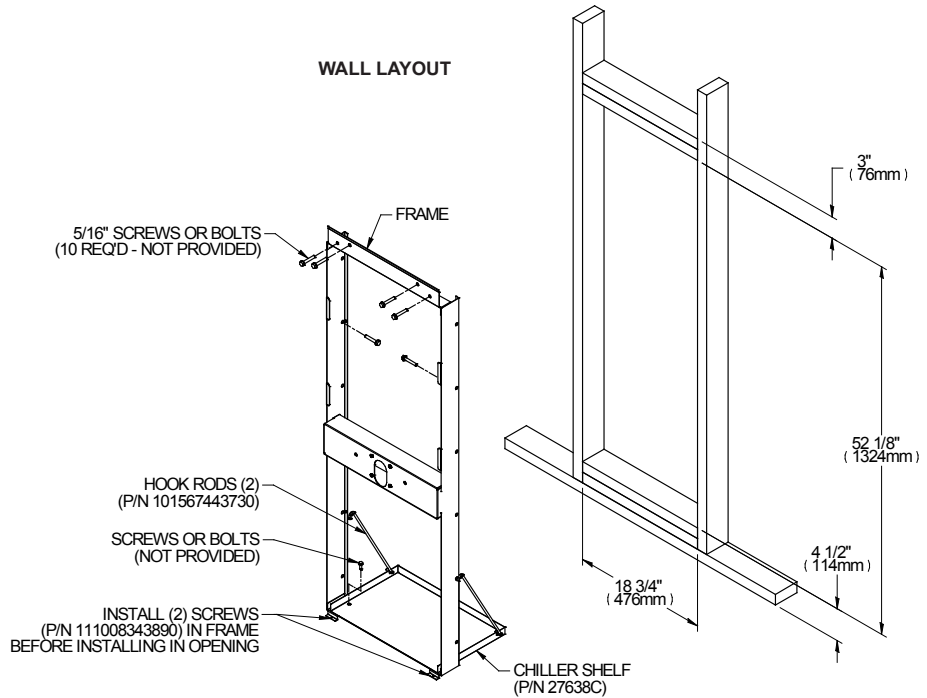
Job Name: _____
 Date: _____ Qty. _____
 Contact Info (Name, Phone, Email): _____

 Approval: _____

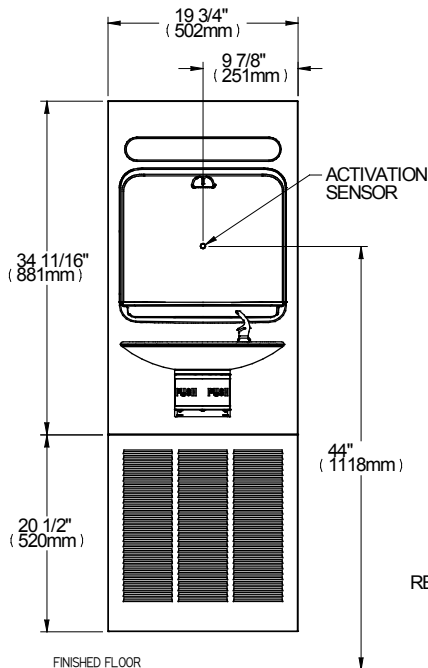
OPERATING PRESSURES:
 Supply water - 105 psi maximum

ELECTRICAL
 Hydroboost® station equipped with electric cord and three-prong molded rubber plug for use with 15-amp minimum receptacle. For the cooling unit, a junction box for a (3) wire, 10 amp branch circuit is provided. Rated at 115 volt, 60 Hz, single phase.

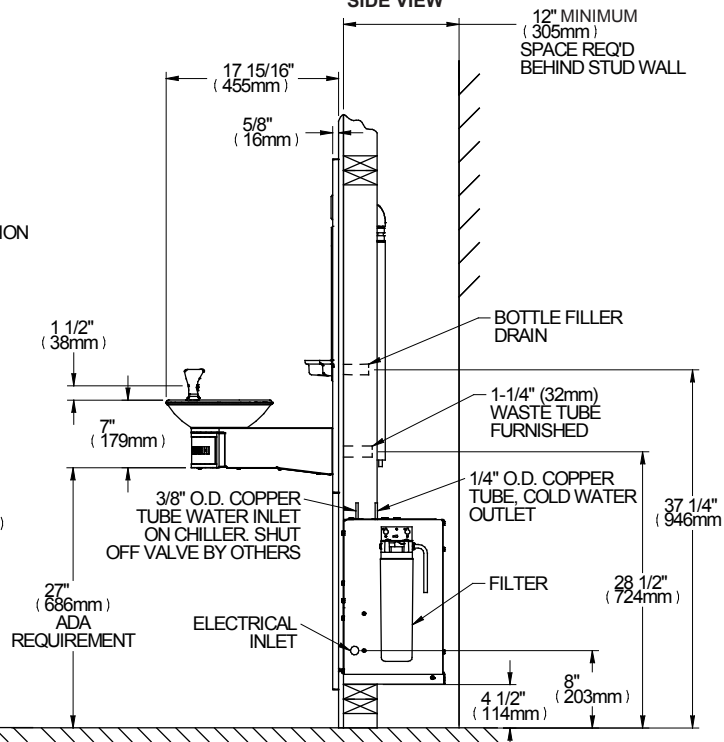
WALL LAYOUT



FRONT VIEW



SIDE VIEW



****NEW INSTALLATIONS MUST USE GROUND FAULT CIRCUIT INTERRUPTER *GFCI)**

Halsey Taylor®

Printed in the U.S.A.