



**Halsey Taylor**<sup>®</sup>  
Satisfying Thirsts Since 1912

**Versatile Bi-Level HTVZ Water Cooler**  
Filtered, Pushbar Activated  
Models HTVZ8BLPV-WF, HTVZ8BLSS-WF  
and HTVZDBLPV-WF and HTVZDBLSS-WF

# Filtered Bi-Level Barrier-Free Cooler

Rated for Indoor Use Only



Versatile Cooler Models HTVZ8BL configuration as shipped



Versatile Cooler Models HTVZ8BL alternate installation

**MODELS:**

- ☐ HTVZ8BLPV-WF (Platinum Vinyl)
- ☐ HTVZ8BLSS-WF (Stainless Steel)
- ☐ HTVZDBLPV-WF (Platinum Vinyl, Less Refrigeration)
- ☐ HTVZDBLSS-WF (Stainless Steel, Less Refrigeration)

These units are replacing past models:  
HTV8BL-WF-Q-TTG  
HTV8BL-WF-Q-TTG  
HTVBL-L/R-WF-TTG  
HTVBL-L/R-WF-TTG

**GENERAL SPECIFICATIONS**

Self-contained, electric refrigerated wall-mounted filtered water cooler easily accessible to physically challenged individuals. HTVZ8BL delivers 8 gph of 50°F drinking water at 90°F ambient air and 80°F inlet water. Model HTVZDBL delivers non-refrigerated drinking water. Shall include the WaterSentry® VII 1500-gallon capacity filter, certified to NSF/ANSI 42 and 53. Exclusive one-piece, Chrome-plated two-stream Double Bubbler™ with non-removable anti-squirt feature and integral hood. Automatic stream height regulator is located inside unit to prevent tampering. Includes self-closing, light touch front and side pushbar actuation with raised letters for the visually impaired. Type 300 series stainless steel cooler top, with satin finish resists stains. Contoured to insure proper drainage. The manufacturer shall certify the unit to meet the requirements of NSF/ANSI 61 and 372, UL 399 and CAN/CSA 22.2 No. 120.

**STANDARD FEATURES**

- Easy-Touch pushbar activation
- WaterSentry® VII 1500-gallon capacity Filtration System, certified to NSF/ANSI 42 & 53 (Lead, Class 1 Particulate, Chlorine, Taste & Odor)
- Extra deep basin minimizes splashing; with integral drain
- **Exclusive one-piece**, Chrome-plated two-stream Double Bubbler™ with non-removable anti-squirt feature and integral hood. It's integral hood insures a satisfying drink of water
- Valve with built-in flow regulator to provide constant stream from 20 to 105 psi water pressure
- \*Versatile cooler design allows units to be installed either left-hand high and right-hand low or left-low and right high
- Finish options: Impact-resistant vinyl coating or stainless steel wrapper
- Rated for Indoor use

**WATER INLET**

3/8" O.D. Tubing. **DRAIN OUTLET** - 1-1/2" tube outlet for 1-1/2" slip joint connection. **Trap and service stop not included.**

**COOLING SYSTEM (Models HTVZ8BLPV-WF & HTVZ8BLSS-WF only)**

- Compressor: Hermetically-sealed, reciprocating type, single phase. Sealed-in lifetime lubrication.
- Condenser: Fan cooled, copper tube with aluminum fins. Fan motor is permanently lubricated.
- Cooling Unit: Tube type. Self-cleansing. Continuous copper tubing which is fully insulated with EPS foam that meets UL requirements for self-extinguishing material.
- Refrigerant Control: Refrigerant R134a is controlled by accurately calibrated capillary tube.
- Temperature Control: Easily accessible enclosed adjustable thermostat is factory preset. Requires no adjustment other than for altitude requirements.

**CONSTRUCTION**

- Stainless Steel basin with integral drain
- Galvanized structural steel cooler chassis provides structural integrity
- Cooler cabinet available as Platinum Vinyl Clad Steel or Stainless Steel (additional cost) construction
- Chrome-plated two-stream Double Bubbler™ with non-removable anti-squirt feature and integral hood.

**REPLACEMENT FILTER:**

55897C (Single)

**WARRANTY**

5 year limited warranty on the unit's refrigeration system. Electrical components and water system are warranted for 12 months from date of installation or 18 months from factory shipment, whichever date falls first.

**CAPACITIES CHART**



Model	Voltage / Hertz	Chilling** Capacity	F.L. Amps	Rated Watts	Approx. Ship Wt.	ADA Compliant	UL399 and CAN/CSA 22.2 No. 120 Certified	NSF/ANSI 61 and 372 Certified	NSF/ANSI 42 and 53 Certified (Filter only)
HTVZ8BLPV-WF	115V / 60Hz	8.0 GPH	4.0	370	75 lbs.	•	•	•	•
HTVZ8BLSS-WF	115V / 60Hz	8.0 GPH	4.0	370	75 lbs.	•	•	•	•
HTVZDBLPV-WF	115V / 60Hz	—	1.0	120	49 lbs.	•	•	•	•
HTVZDBLSS-WF	115V / 60Hz	—	1.0	120	49 lbs.	•	•	•	•

\*\*Based on 80°F inlet water & 90°F ambient air temp for 50°F chilled drinking water.

NOTE: Continued product improvement makes specification sheets subject to change without notice. Color code of (PV) Platinum Vinyl and (SS) for Stainless Steel cooler wrapper.

Versatile Bi-Level HTVZ Water Cooler

Filtered, Pushbar Activated

Models HTVZ8BLPV-WF, HTVZ8BLSS-WF

and HTVZDBLPV-WF and HTVZDBLSS-WF

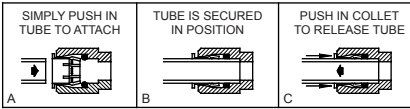


Halsey Taylor®

Satisfying Thirsts Since 1912

Rated for Indoor Use Only

OPERATION OF QUICK CONNECT FITTINGS



PUSHING TUBE IN BEFORE PULLING IT OUT HELPS TO RELEASE TUBE

NOTE: A service stop (not included) must be installed at the water inlet line.

NOTE: P-Trap (not supplied) to be installed per local building code.

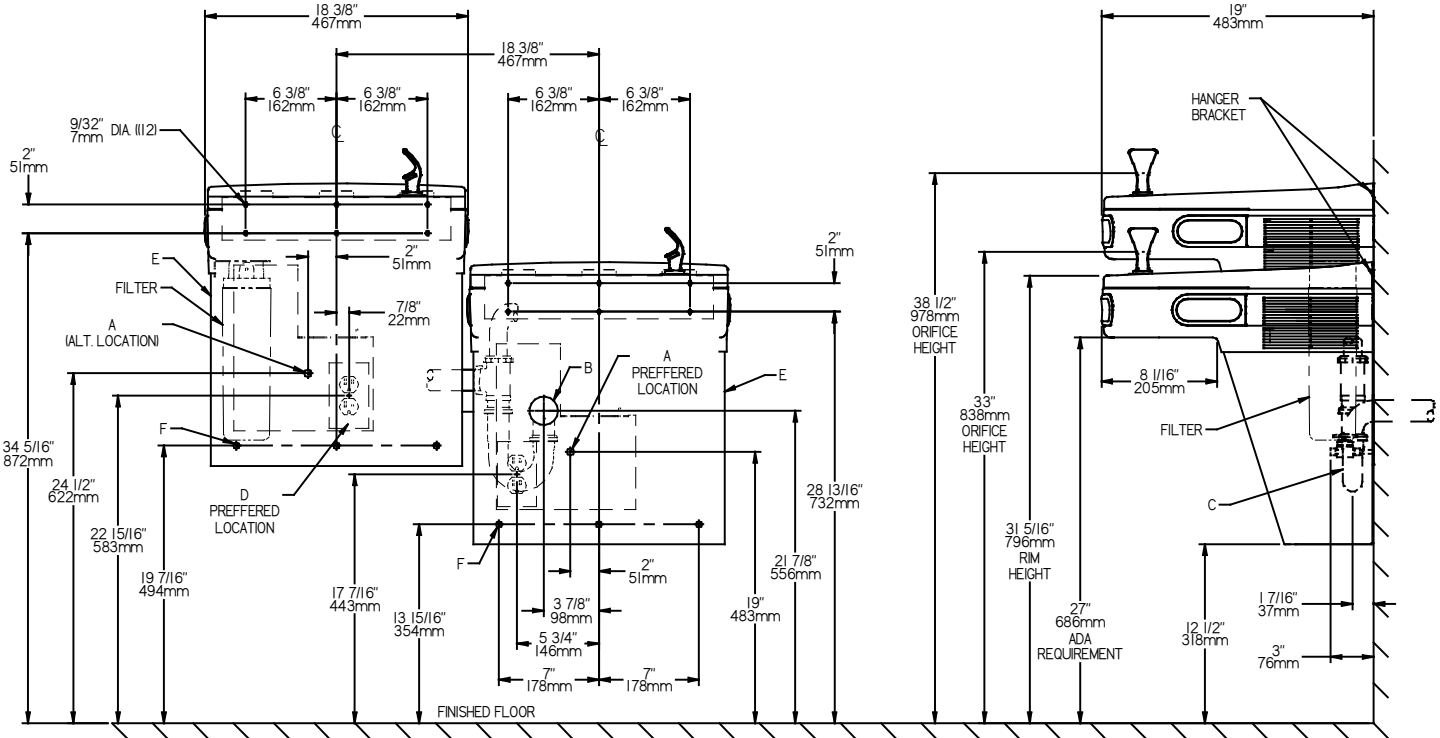
OPERATING PRESSURES

Supply water - 105 psi maximum. Minimum 40 psi supply line pressure required in special circumstances where both sides of bi-level are in use simultaneously to ensure adequate stream height. Use of water filter in this situation is not recommended.

STANDARD ROUGH-IN FOR LEFT-HAND HIGH SIDE

FRONT VIEW

SIDE VIEW



REDUCE HEIGHT BY 3" FOR INSTALLATION OF CHILDREN'S ADA COOLER

LEGEND:

- A = Recommended Water Supply Location. Shut-off valve (not furnished) to accept 3/8" O.D. unplated copper tube. Up to 3" (76mm) maximum out from wall.
  - B = Recommended Waste Outlet location. To accommodate 1-1/2" nominal drain. Drain stub 2" (51mm) out from wall.
  - C = 1-1/2" Trap (not furnished).
  - D = Electrical Supply (3) Wire Recessed Box Duplex Outlet.
  - E = Insure proper ventilation by maintaining 6" (152mm) minimum clearance from cabinet louvers to wall.
  - F = 7/16" (11mm) Bolt Holes for fastening to wall.
- \*\*New Installations Must Use Ground Fault Circuit Interrupter (GFCI).

Job Name: \_\_\_\_\_

Model: \_\_\_\_\_ Qty. \_\_\_\_\_

Contact: \_\_\_\_\_

Approval Signature: \_\_\_\_\_

Notes: \_\_\_\_\_

Halsey Taylor®

**Versatile Bi-Level HTVZ Water Cooler**

**Filtered, Pushbar Activated**

**Models HTVZ8BLPV-WF, HTVZ8BLSS-WF**

**and HTVZDBLPV-WF and HTVZDBLSS-WF**

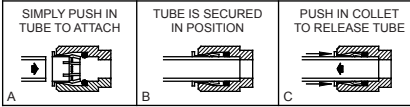


**Halsey Taylor®**

*Satisfying Thirsts Since 1912*

Rated for Indoor Use Only

**OPERATION OF QUICK CONNECT FITTINGS**



PUSHING TUBE IN BEFORE PULLING IT OUT HELPS TO RELEASE TUBE

**NOTE:** A service stop (not included) must be installed at the water inlet line.  
**NOTE:** P-Trap (not supplied) to be installed per local building code.

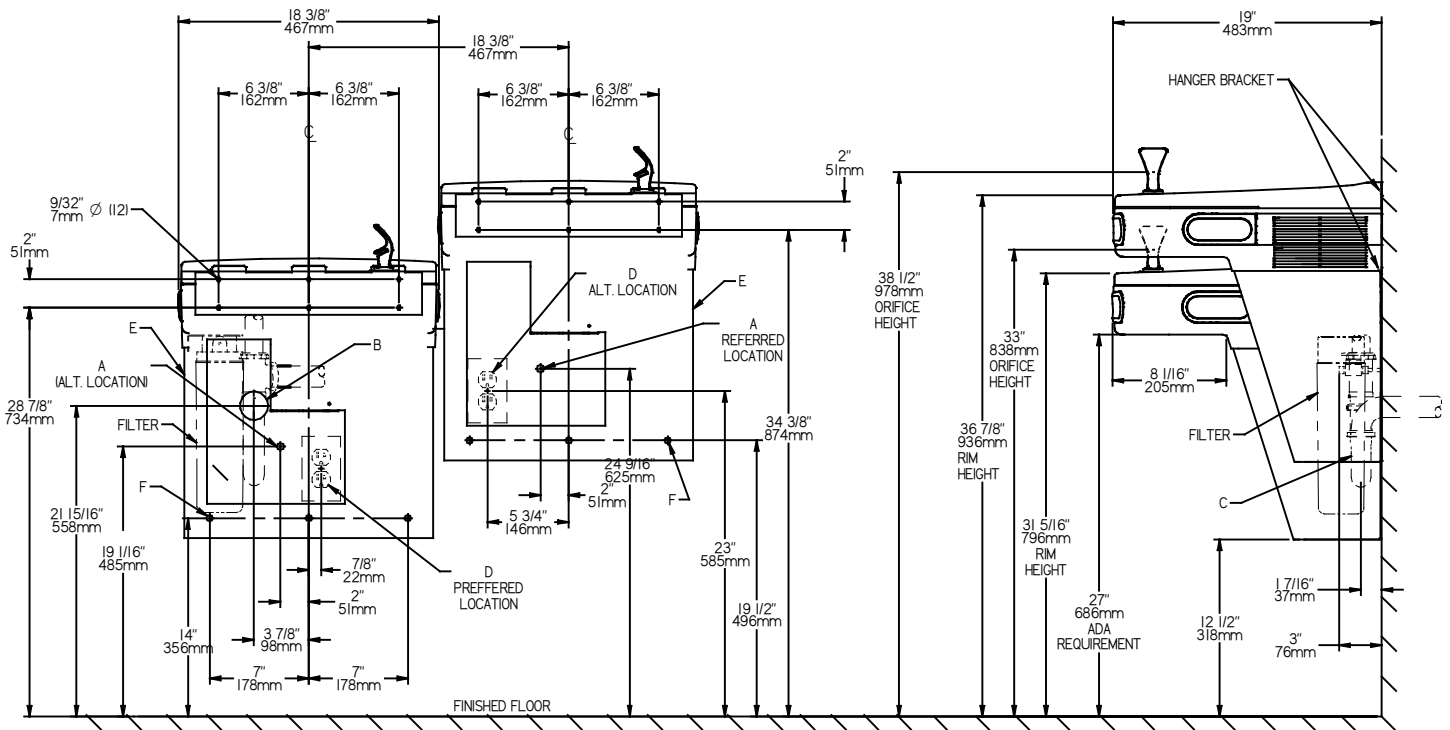
**OPERATING PRESSURES**

Supply water - 105 psi maximum. Minimum 40 psi supply line pressure required in special circumstances where both sides of bi-level are in use simultaneously to ensure adequate stream height. Use of water filter in this situation is not recommended.

**ALTERNATE ROUGH-IN FOR RIGHT-HAND HIGH SIDE**

**FRONT VIEW**

**SIDE VIEW**



**REDUCE HEIGHT BY 3" FOR INSTALLATION OF CHILDREN'S ADA COOLER**

**LEGEND:**

- A = Recommended Water Supply Location. Shut-off valve (not furnished) to accept 3/8" O.D. unplated copper tube. Up to 3" (76mm) maximum out from wall.
  - B = Recommended Waste Outlet location. To accommodate 1-1/2" nominal drain. Drain stub 2" (51mm) out from wall.
  - C = 1-1/2" Trap (not furnished).
  - D = Electrical Supply (3) Wire Recessed Box Duplex Outlet.
  - E = Insure proper ventilation by maintaining 6" (152mm) minimum clearance from cabinet louvers to wall.
  - F = 7/16" (11mm) Bolt Holes for fastening to wall.
- \*\*New Installations Must Use Ground Fault Circuit Interrupter (GFCI).

Job Name: \_\_\_\_\_

Model: \_\_\_\_\_ Qty. \_\_\_\_\_

Contact: \_\_\_\_\_

Approval Signature: \_\_\_\_\_

Notes:

**Halsey Taylor®**