

A

6-17/32" (166 mm)

B

DRYER MOUNTING TEMPLATE

Fix this card to the wall.

Drill 4 holes

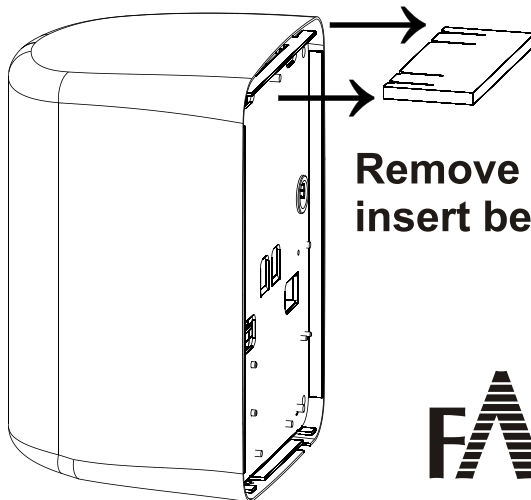
(A. B. C. D. 5/16" (8 mm) diameter: 1-3/8" (35 mm) depth.)

Electrical Connection

1. Secure the base plate on the wall.
2. Use only 1/2 inch trade conduit.
3. Connections:
 - A. Connect the red (or brown) live wire to the terminal block marked "L".
 - B. Connect the black (or blue) neutral wire to the terminal block marked "N".
 - C. Connect the green and yellow (or green, note bare earth wires should be sleeved with green and yellow or green sleeving) earth wire colored to the ground washer marked with the earth symbol. ⊕

Mounting heights from bottom of dryer

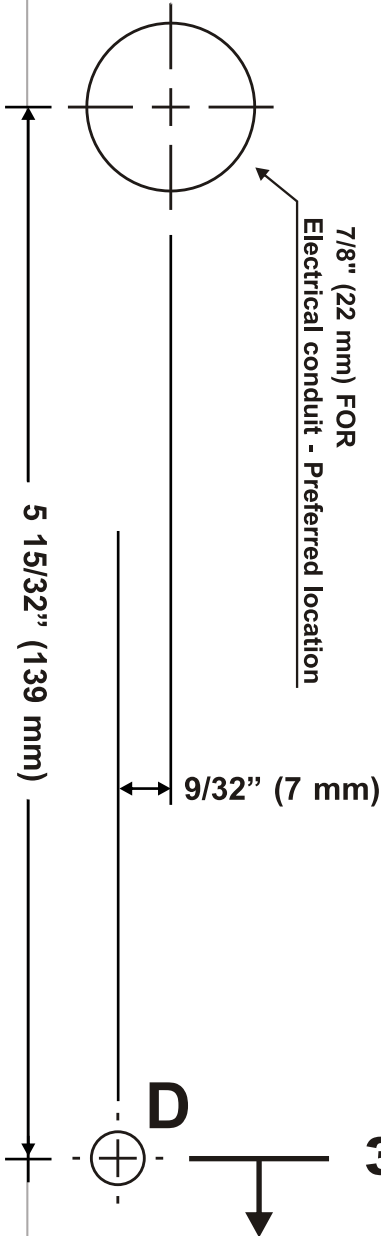
| | | |
|----------------------|-----|---------|
| Men's | 43" | (109cm) |
| Ladies | 41" | (104cm) |
| Children, ages 11-17 | 39" | (99cm) |
| Children, ages 3-10 | 33" | (84cm) |
| Handicapped | 35" | (89cm) |



Remove cardboard insert before installation

FASTDRY

39" (100 cm) 39" (100cm) from floor.
(See mounting chart above.)



9-9/64" (232 mm)

C