



**AMERICAN SPECIALTIES, INC.**

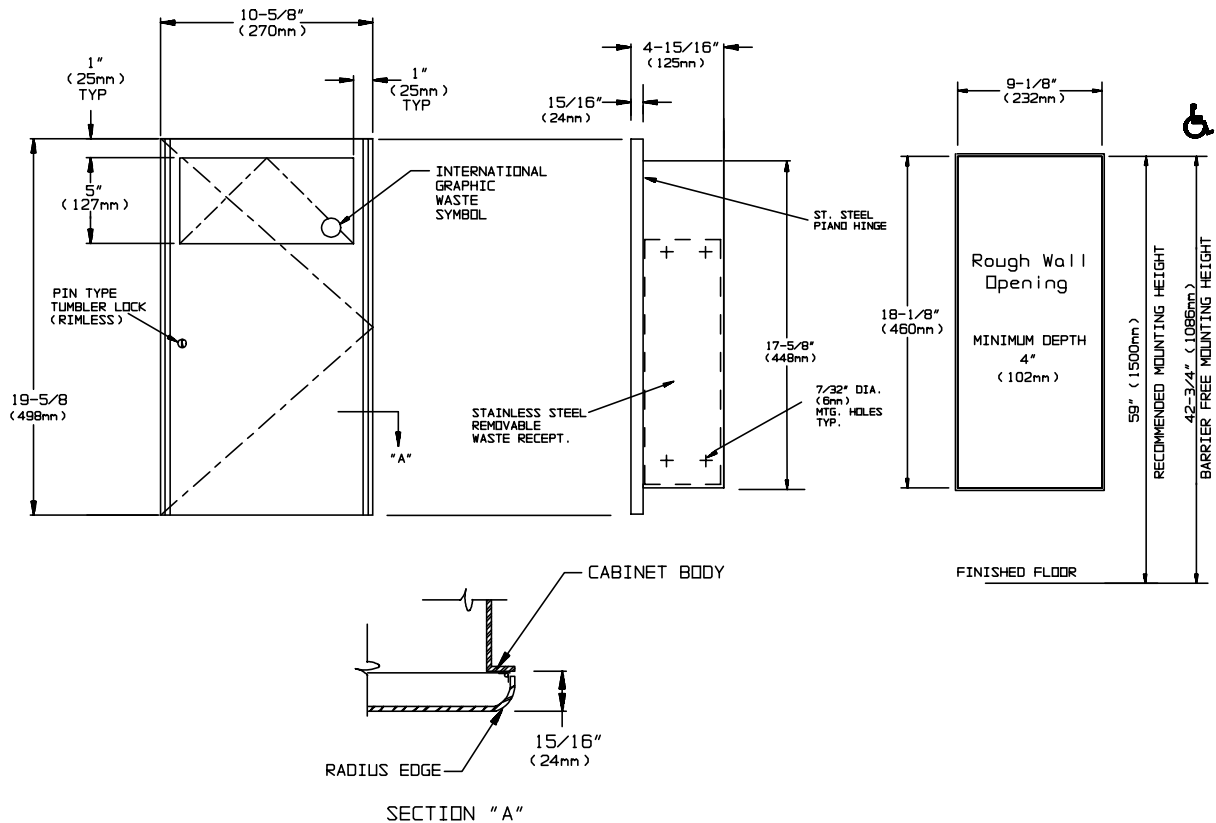
441 Saw Mill River Road, Yonkers, NY 10701 (914) 476-9000

MODEL No: 9471

ISSUED: 1-87

REVISED: 9-04

**RECESSED SANITARY NAPKIN DISPOSAL**



**SPECIFICATION**

Recessed Sanitary Napkin Disposal unit shall have a waste capacity of 1.8 gal (7 liters) of dry/solids waste. Cabinet shall be fabricated of alloy 18-8 stainless steel, type 304, 20 gauge with a 1" (25mm) wide perimeter return to lay flat against wall. Full face door shall be 16 gauge with a 15/16" (24mm) square return to wall at top and bottom and 3/4" (19mm) radius returns to wall on vertical edges with no visible seams. Door shall be attached to the cabinet body with a 3/16" (5mm) dia. stainless steel multi-staked piano hinge and shall be held closed with a tumbler lock keyed alike to other ASI washroom equipment. Push door shall be hung on a spring loaded solid stainless steel pivot rod and shall have the international graphic symbol for waste on face. Waste can shall be fabricated of stainless steel and shall be provided with a pull for easy servicing and removal. All exposed surfaces of unit shall have a N° 4 satin finish.

**Recessed Sanitary Napkin Disposal unit shall be Model N°9471 as manufactured by American Specialties, Inc., 441 Saw Mill River Road, Yonkers, New York 10701-4913**

**INSTALLATION**

Mount unit with N° 10 self-tapping screws (by others ) through concealed mounting holes provided. For compliance with ADA Accessibility Guidelines install unit so that center of waste door is 40" (1016mm) maximum above finished floor (AFF). For general utility unit should be installed in a RWO with its bottom edge 16-3/4" (425mm) above finished floor. Note that bottom edge of RWO is 3/4" (19mm) above bottom of unit.

**Rough Wall Opening (RWO) required is..... 9-1/8"W x 18-1/8"H x 4-1/4"D (232mm x 460mm x 108mm)**

**OPERATION**

Users push door to deposit waste material. Door is self-closing . Maintenance schedule determines waste removal cycle. Unit is emptied by removing bottom waste container and inverting over collection bag. Safety finger grip on waste receptacle provides convenient grip for service. Locked door prevents unauthorized access or removal.

Accessory Specialties

AMERICAN DISPENSER

Desert Ray Products

WATROUS INC.

THIS MANUFACTURER RESERVES THE RIGHT TO MAKE CHANGES IN DESIGN OR DIMENSIONS WITHOUT FORMAL NOTICE