



AMERICAN SPECIALTIES, INC.

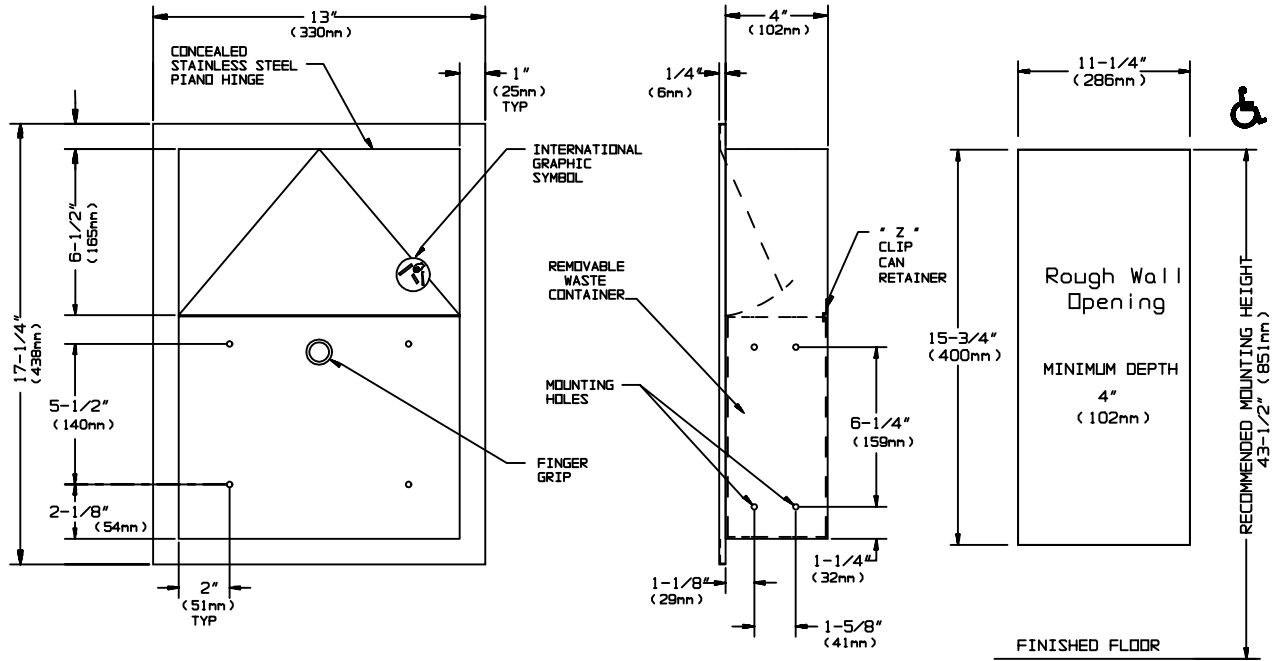
441 Saw Mill River Road, Yonkers, NY 10701 (914) 476-9000

MODEL No: 0473

ISSUED: 1-87

REVISED: 9-04

RECESSED SANITARY NAPKIN DISPOSAL



SPECIFICATION

Recessed Sanitary Napkin Disposal shall hold 1.5gal (5.7 liters) of dry solids. Upper door, waste container and cabinet frame shall be fabricated of alloy 18-8 stainless steel, type 304, 22 gauge. Structural assembly of body and door components shall be of welded construction. Upper door shall be hung on cabinet with a stainless steel spring hinge and have the international waste symbol on face. All exposed surfaces shall have a N^o 4 satin finish and be protected during shipment with a PVC film that shall be easily removable after installation. Face trim shall be of one piece construction 1" (25.4mm) wide with no welded miters and shall have square 1/4" (6.35mm) return to wall..

Recessed Sanitary Napkin Disposal shall be Model N^o 0473 as manufactured by American Specialties, Inc., 441 Saw Mill River Road, Yonkers, New York 10701-4913

INSTALLATION

Unit is mounted in wall recess using N^o 10 self tapping screws (by others) through concealed mounting holes provided. Note that top of rough wall opening is 3/4" (19mm) below top of unit.

Rough Wall Opening required is.....11-1/4" W x 15-3/4" H x 4" D. minimum (286mm x 400mm x 102mm)

OPERATION

Users push door to deposit waste material. Door is self-closing. Unit is emptied by removing can and removing disposable waxed waste paper bag which is furnished by others. Waste container is held in place by a "Z" clip retainer to prevent inadvertent dumping of contents. Safety-edged finger grip provides convenient grip for service.

Accessory Specialties

AMERICAN DISPENSER

Desert Ray Products

WATROUS INC.

THIS MANUFACTURER RESERVES THE RIGHT TO MAKE CHANGES IN DESIGN OR DIMENSIONS WITHOUT FORMAL NOTICE