



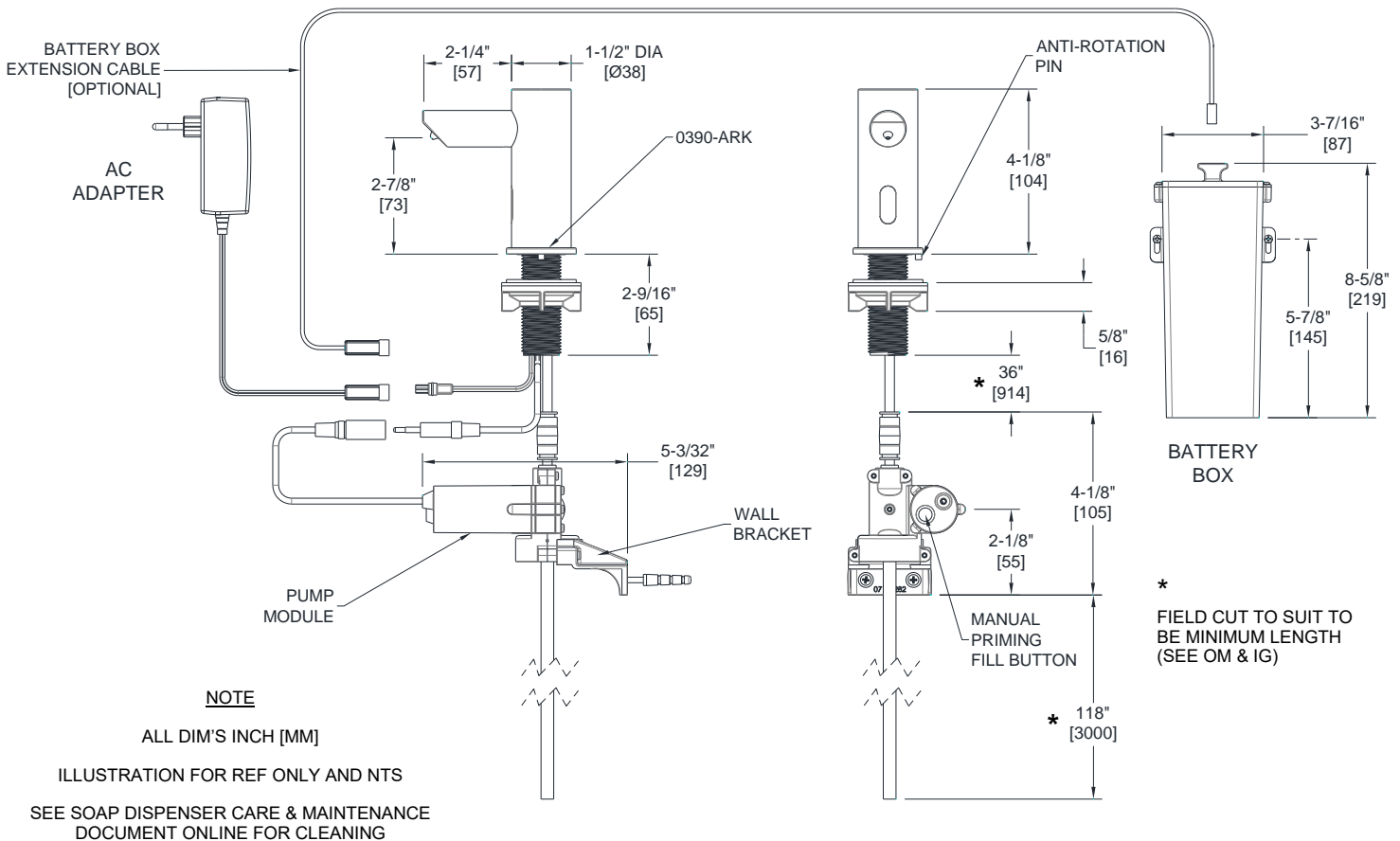
AMERICAN SPECIALTIES, INC.
 441 Saw Mill River Road, Yonkers, NY 10701
 (914) 476.9000 • (914) 476.0688
 www.americanspecialties.com

MODEL №: 0390-(n)

ISSUED: 01-14

REVISED: 13 FEB 2020

EZ FILL™ VANITY MOUNTED AUTOMATIC SOAP DISPENSER (Pg 1 of 2)



SPECIFICATION

EZ FILL™ Vanity Mounted Automatic Soap Dispensing System Soap Dispenser shall dispense liquid soap with pH in range 7± 1.5 and viscosity in range 100–3800 cP (mPa·s) and shall dispense in stream cycles with volumes of approximately 0.007 oz (0,2 ml) to 0.08 oz (2,3 ml) in four (4) steps programmable by owner with remote control programming unit (optional, Model № 0390-R; supplied one (1) per six (6) pack) with factory preset at approximately 0.03 oz (0,8 ml). Operation is initiated by hands-free sensor controlled by microprocessor digital circuitry and peristaltic pump is powered by six (6) ‘D’-size 1.5V batteries (supplied by others) in a screw-locked IP67 rated compartment (provided) located under counter or an AC Adapter (also IP67 rated, provided, select model) plugged into GFCI outlet (by others). Unit shall have chrome plated spout and sensor housing with a highly polished finish (or Matte Black when code -41 is specified) over all exposed surfaces. Unit shall have LED in sensor to indicate function and battery condition (when Battery Box, 0390-BP {provided}, is used). A self-adhesive label shall be supplied for use at owner’s option to indicate dispenser function. Unit shall mount on vanity deck up to 2" [51] thick through 1" Dia [Ø25] hole min to 1-1/4" Dia [Ø32] max and shall resist forced rotation up to 177 in-lbf (20 Nm) with 0390-ARK properly installed (provided). **NOTE: Soap supply shall be from Model № 0390 EZ FILL™ Vanity Mounted Top-Fill Port and Multi-Feed Tank (supplied separately) with capacity of 1.6 Gal (6 L) of liquid soap containing no abrasives or particulates.** Up to six (6) individual EZ FILL™ vanity mounted automatic soap dispenser units shall draw from each Multi-Feed tank located under counter through connection with under-counter soap distribution tubing (provided). Owner’s Manual and Installation Guide (OM & IG) shall be provided with unit in carton.

EZ FILL™ Multi-Feed Vanity Mounted Automatic Soap Dispensing System Soap Dispenser shall be Model № 0390-_____ (specify suffix code -41 for Matte Black color from schedule) of American Specialties, Inc., 441 Saw Mill River Road, Yonkers, NY 10701-4913



AMERICAN SPECIALTIES, INC.
 441 Saw Mill River Road, Yonkers, NY 10701
 (914) 476.9000 • (914) 476.0688
 www.americanspecialties.com

MODEL №: 0390-(n)

ISSUED: 01-14

REVISED: 13 FEB 2020

EZ FILL™ VANITY MOUNTED AUTOMATIC SOAP DISPENSER (Pg 2 of 2)

INSTALLATION

Install spout and sensor housing to vanity deck with anti-rotation kit escutcheon flange, rubber washers and basin nut (supplied) through 1-1/8" Dia [Ø28,5] mounting hole and 5/32" Dia [Ø4] adjacent hole for anti-rotation pin of escutcheon flange. Mount pump/control housing to convenient structure under vanity within 24" [610] of shank bottom with two (2) screws and wall anchors (supplied). Connect flex tubing from dispenser shank to fitting on top of pump/control housing. Connect spout control cable plug into control unit inline cable connector. Connect clear soap supply flex tubing (provided attached to fitting on pump/control housing) to one of six available connectors on Model № 0390 Multi-Feed tank (supplied separately) so that tube end is just above bottom of tank. Mount battery compartment in convenient location under vanity deck with two (2) screws and wall anchors (supplied) within easy reach of extension cable length and plug connector into mating inline power connector. Install six (6) 'D'-size 1.5V cells (supplied by others) in under-deck battery compartment according to polarity indication, plug battery cable jack into battery box socket in cover handle and screw lock cover. The optional Battery Extension Cable (shown on diagram, p/n 0390-EBC) may help make installation easier in tight under-vanity conditions. Alternatively, plug AC Adapter into GFCI power outlet located under vanity within 13.5 ft (412 cm) of pump/control housing and plug connector into mating inline power connector. See OM & IG provided in box with unit for complete installation details.

OPERATION

System shall operate each time an object is positioned within the sensing range of 1-3/16" [30] to 3-15/16" [100] ± 3/8" [10] directly in front of the spout of the dispenser. A stream of appropriate viscosity non-abrasive liquid soap drops with total dispense amount of 0.03 oz (0,8 ml) will be pumped from the nozzle during each activation. Optional remote control unit Model № 0393-R (supplied {one (1) per six (6) pack} or order separately) will allow owner programming of alternate dispense amounts and simplify priming when refilling Multi-Feed tank (not supplied, order separately) for initial setup and soap-out conditions. See Model № 0393-R TDS and Owner's Manual for complete description of functions. Unit will dispense soap while batteries are at suitable charge level (or AC adapter is connected) and correct viscosity soap is present in the tank and system is correctly maintained to enable dispensing (LED is not flashing continuously or does not remain dark when trigger attempt is made). LED will display flash for sensing and continuous flashing for low battery condition (if AC Adapter is not utilized). Manual priming fill button on pump runs motor (or use 0390-R) for easy soap priming. System shall allow filling soap from top of vanity without requiring access under vanity. Up to six (6) individual dispensers will draw soap from tank as required to operate until supply is depleted. Unused transfer ports in tank cap are blocked with solid plugs (provided) to prevent overflow, contamination and evaporation. Soap is manually replenished and batteries are replaced on service interval determined by maintenance schedule. See OM & IG for complete description of Features and Operations.

Schedule of Model № Suffix Codes and Application

Model № Suffix	Service Application
1A	Universal Model, Battery Operation Bright Chrome Plated Finish
1A-41	Universal Model, Battery Operation Matte Black Finish
1AC	USA/UK/EU AC Adapter Operation Bright Chrome Plated Finish
1AC-41	USA/UK/EU AC Adapter Operation Matte Black Finish
3AC	AU Model, AC Adapter Operation Bright Chrome Plated Finish
3AC-41	AU Model, AC Adapter Operation Matte Black Finish
6-1A	Universal Model, Battery Operation, Six Pack Bright Chrome Plated Finish
6-1A-41	Universal Model, Battery Operation, Six Pack Matte Black Finish
6-1AC	USA/UK/EU AC Adapter Operation, Six Pack Bright Chrome Plated Finish
6-1AC-41	USA/UK/EU AC Adapter Operation, Six Pack Matte Black Finish
6-3AC	AU Model, AC Adapter Operation, Six Pack Bright Chrome Plated Finish
6-3AC-41	AU Model, AC Adapter Operation, Six Pack Matte Black Finish